



**AGENDA**  
**OTSEGO COUNTY BOARD OF ROAD COMMISSIONERS**  
**THURSDAY, MARCH 14, 2024, AT 9:00 A.M.**

**ITEM 1 – CALL TO ORDER/PLEDGE OF ALLEGIANCE**

**ITEM 2 - ROLL CALL**

**ITEM 3 – AGENDA CHANGES/APPROVAL OF AGENDA**

**ITEM 4 – CONSENT CALENDAR**

- A. Minutes: The Board approves the Regular Meeting Minutes dated February 12, 2024.
- B. The Board approves Payroll #3 (\$87,097.24), and Payroll #4 (\$88,771.40).
- C. The Board approves accounts Payable: C/2-2 (\$81,678.45), and C/3-1 (\$273,734.99), and the Accounts Payable Check Register dated 2/01/2024 to 2/29/2024.

**ITEM 5 – GUEST SPEAKERS**

- A. Dana Wingo, Otsego County Board Liaison

**ITEM 6 – PUBLIC COMMENT**

**ITEM 7– OLD BUSINESS/UNFINISHED BUSINESS**

**ITEM 8 – NEW BUSINESS**

- A. Waste Hauler Policy Review
- B. Bid Award—Sparr Road (Wolf Rd to Tin Shanty Rd)
- C. Bid Award—Highlands Project (Trillium Trl, Edelweiss Trl, Bagley St, Timberlane Trl)
- D. Bid Award—Michaywe Project (Bob White Way, Snowmass Ct, Golden Elk Ct.)
- E. Bid Award—Culvert Replacement (Wilkinson Road over South Branch Pigeon River Culvert)
- F. OCRC Gravel Pit Management

**ITEM 9 – STAFF REPORTS**

- A. Managing Director, County Engineer, Operations Manager, Finance Manager, Facilities/Equipment Supervisor, Road Maintenance Supervisor

**ITEM 10 – COMMUNICATIONS**

- A. Upcoming OCRC Board Meeting Dates: April 11, 2024, May 9, 2024
- B. County Engineer: Project Award Recommendations
- C. 2024 Road Project Summary
- D. 2023 MTF Funds Comparison
- E. 2023 Budget Comparison
- F. 2024 – 2026 Estimated MTF Distribution
- G. MTF Sources Comparison
- H. 2022 & 2023 MERS Statement of Fiduciary Net Position Comparison
- I. David Fox: OCRC Equipment List

**ITEM 11 – PUBLIC COMMENT**

**ITEM 12 – COMMISSIONER COMMENT**

**ITEM 13 – ADJOURNMENT**



# Otsego County Road Commission Agenda Item Report

---

**FROM:** Rebecca Hilmert, Finance Manager  
**MEETING DATE:** March 14, 2024  
**AGENDA ITEM:** 4. A, B, C  
**SUBJECT:** Consent Calendar

## **DESCRIPTION**

The purpose of the Consent Calendar is to expedite business by grouping non-controversial items together without discussion. Any member of the Commission, staff, or the public may ask that any item on the Consent Calendar be removed and placed elsewhere on the agenda for full discussion. Such requests will be automatically respected.

If an item is not removed from the Consent Calendar, all items listed are approved by a single Commission action approving the Consent Calendar. The Finance Manager recommends the following items be approved:

- A. Minutes: The Board approves the Regular Meeting Minutes dated February 12, 2024.
- B. The Board approves Payroll: #3 (\$87,097.24), and Payroll #4 (\$88,771.40).
- C. The Board approves accounts Payable: C/2-2 (\$81,678.45), and C/3-1 (\$273,734.99) and the Accounts Payable Check Register dated 02/01/2024 to 02/29/2024.

## **BUDGET ACTION REQUIRED**

N/A

## **LEGAL REVIEW**

N/A

## **SAMPLE MOTION:**

Motion to **approve/deny** the March 14, 2024, consent calendar as presented.



**UNAPPROVED**  
**MINUTES for the**  
**REGULAR MEETINGS OF THE**  
**OTSEGO COUNTY ROAD COMMISSION**  
**HELD ON MONDAY, FEBRUARY 12, 2024, AT 9:00 A.M.**

**ITEM 1 – CALL TO ORDER/PLEDGE OF ALLEGIANCE**

- Meeting called to order by Chairman Huff, at 9:00 a.m. and Pledge of Allegiance.

**ITEM 2 - ROLL CALL**

- Upon roll call, the following Commissioners responded:  
Dipzinski, Absent, Excused  
Wagar, Present  
Gordon, Present, Tardy  
Heinz, Present  
Huff, Present

The following staff members were present: Kirk Harrier, Managing Director; Rebecca Hilmert, Finance Manager/Board Secretary; Scott Butkovich, Operations Manager; David Fox, Equipment/Facilities Supervisor; Steve Mench, Road Maintenance Supervisor

**ITEM 3 – AGENDA CHANGES/APPROVAL OF AGENDA**

- Motion by Heinz to approve the agenda as presented, seconded by Wagar. Three ayes, no nays. Motion carried.

**ITEM 4 – CONSENT CALENDAR**

- A. Minutes: The Board approves the Regular Meeting Minutes dated January 11, 2024
- B. The Board approves Payroll: #1 (\$88,256.36), and Payroll #2 (\$111,111.92).
- C. The Board approves Accounts Payable: C/1-2 (\$130,106.87) and C/2-1 (\$450,987.99), and the Accounts Payable Check Register dated 1/01/2024 to 1/31/2024.
- Motion by Wagar to approve the February 12, 2024, Consent Calendar, seconded by Heinz. Three ayes, no nays. Motion carried.

**ITEM 5 – GUEST SPEAKERS**

- A. Dana Wingo, Otsego County Board of Commissioners, presented and discussed communication submitted regarding Tittabawassee Road (attached.)
- B. Paula Wright, Otsego County Treasurer, spoke with the board updated the board on road commission investments.

**ITEM 6 – PUBLIC COMMENT**

**ITEM 7 – OLD BUSINESS/UNFINISHED BUSINESS**

**ITEM 8 – NEW BUSINESS**

- A. Resolution R24-1 – Act 51 Certification Map Approval
  - a. Motion by Gordon to approve Resolution R24-1 as presented and direct staff to submit the required report to the State Transportation Commission, seconded by Wagar. Roll Call vote: Gordon, yes; Wagar, yes; Heinz, yes; Huff, yes. Four ayes, no nays. Motion carried.
- B. MERS RHFV Plan Fund Distribution
  - a. Motion by Wagar to approve fund distribution request in the amount of \$223,956.66 from the MERS Retiree Healthcare Funding Vehicle Plan and authorize the managing director and finance manager to sign the request form and submit for reimbursement, seconded by Gordon. Four ayes, no nays. Motion carried.
- C. Leave Sharing Policy

- D. Letter of Agreement #2024-1
  - a. **Motion by Heinz to approve Letter of Agreement #2024-1 between the Otsego County Road Commission and the American Federation of State, County and Municipal Employees Union, Local #1534 as presented, seconded by Wagar. Four ayes, no nays. Motion carried.**
- E. MERS Health Care Saving Plan Agreement/Amendment Division 301240
  - a. **Motion by Gordon to approve the MERS Health Care Savings Plan Agreement and Addendum for Division 301240 as presented and authorize the Managing Director, Kirk Harrier, to execute the documents, seconded by Wagar. Four ayes, no nays. Motion carried.**
- F. 2024 OCRC/MDOT Summer Workplan
  - a. **Motion by Wagar to approve the 2024 OCRC/MDOT Summer Workplan as presented, seconded by Gordon. Discussion. Four ayes, no nays. Motion carried.**
- G. 2024 OCRC Heavy/Routine Maintenance CIP and Master Workplan
- H. 2024 Material Bids
  - a. **Motion by Gordon to approve the following vendor's bids: dust control, DJ Bowen Dust Control, and 23A aggregate, Lewiston Sand and Gravel, seconded by Wagar. Four ayes, no nays. Motion carried.**

#### **ITEM 9 – STAFF REPORTS**

- A. Managing Director updated the board on reorganization of supervisor's and union titles.
- B. Engineer gave an update regarding the submission of Safety Grand Applications due May 1, 2024.
- C. Operations Manager is working on the Master Work Plan, met with MCRC SIP and CRASIF and looks to schedule a safety day in April.
- D. Finance Manager updated the board on FY 2023 MTF, FY 2023 Primary/Local/State Maintenance Totals. Audit scheduled for week of March 11, 2024.
- E. Human Resources/Payroll Manager updated the board on FY 2023 payroll, Cogitate Workgroup Success.
- F. Facilities & Equipment Supervisor took delivery of three pickups and three plows last week. We had an unplanned power outage and questioned a generator upgrade.
- G. Road Maintenance Supervisor has crews patching potholes, graded gravel roads and cutting trees.

#### **ITEM 10 – COMMUNICATIONS**

- A. Upcoming OCRC Board Meeting Dates: March 14, 2024, April 11, 2024.
- B. CRA Annual Conference & Road Show: March 19-21, 2024, DoubleTree by Hilton Lansing, MI

#### **ITEM 11– PUBLIC COMMENT**

- A. Norm Brecheisen, Livingston Township, gave an update to the board regarding high speeds recorded on Hayes and McClouth Roads. The township and Consumers Energy have agreed to install seven additional streetlights for lighting and safety. Their biggest need is a sidewalk for people to use instead of the roadway/shoulder. Some suggestions were to open Winifred Road to thru traffic between Murner and Meecher Roads, and/or to install stop signs to slow traffic down in the problematic area.

#### **ITEM 12– COMMISSIONER COMMENT**

- A. Commissioner Gordon would like an analysis done of the gravel OCRC has to potentially mine from owned pits.
- B. Commissioner Huff would like staff to start working on 2025 road projects with the Townships ASAP. Richard Carlson from Livingston Township suggested taking road project recommendations to the townships for consideration.

#### **ITEM 13 – ADJOURNMENT**

- **Motion by Gordon to adjourn meeting at 11:25 p.m., seconded by Wagar. Four ayes, no nays. Motion carried.**

---

Troy Huff, Chairman

---

Rebecca Hilmert, Board Secretary

January 24, 2024

RE: Concern regarding salt/sand usage by Otsego Co. Road Commission

Dear Dana,

I enjoyed having the recent conversation with you about this subject which is of great concern to me as well as for other citizens of this county.

The primary concern for drivers is:

When the mix is applied with snow on the road it creates several negative effects:

- 1) When applied on snow covered roads it breaks down the snow into greasy, slippery slush which in turns makes it difficult to steer, stop and operate a vehicle safely.
- 2) The mix sticks to vehicles which creates faster deterioration mainly rust.
- 3) When the mix cuts into the snow it makes the roads super rough.
- 4) Use of this mix deteriorates roads, bridges and watersheds.

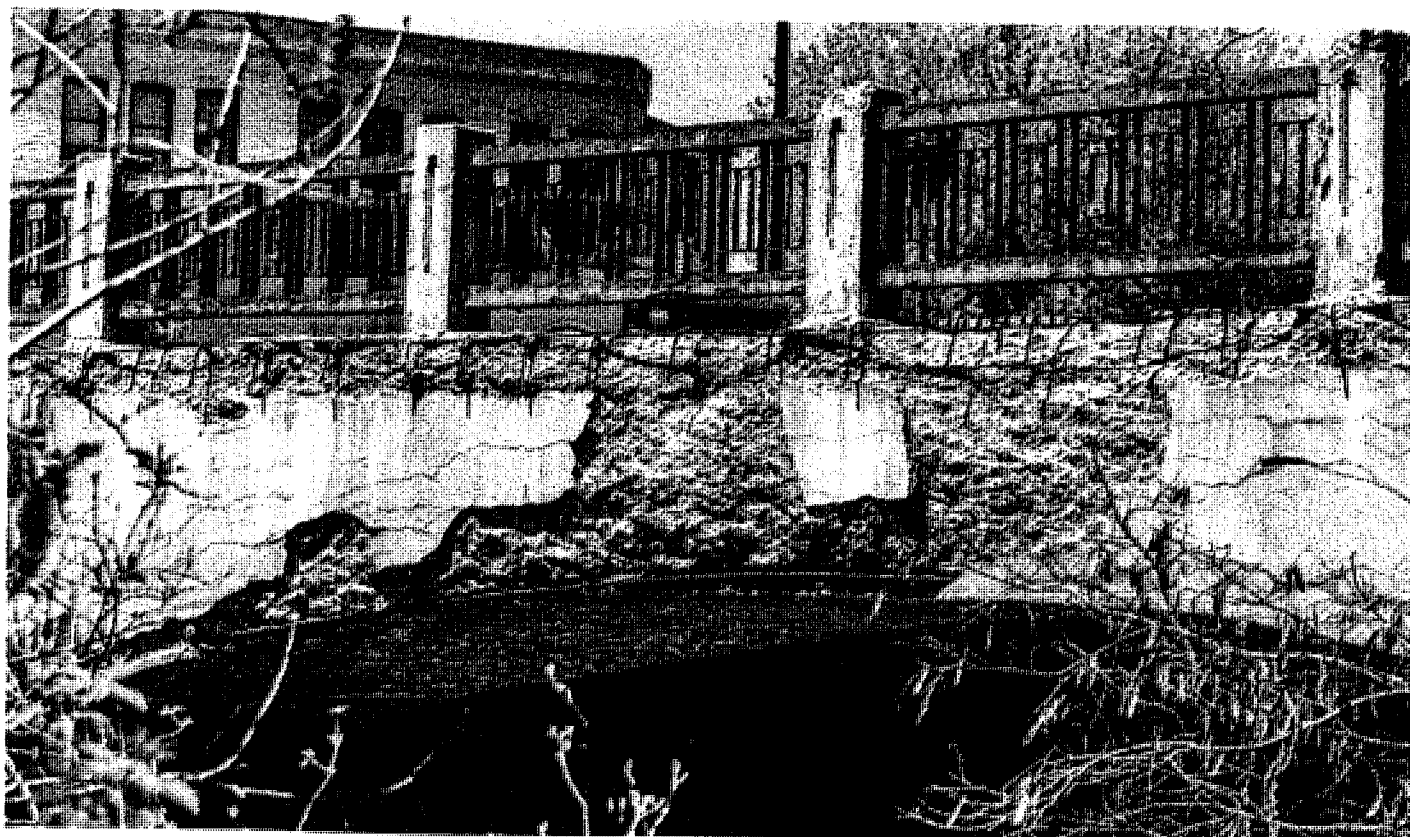
It is my strong opinion that this mix ought to be used only on icy roads. It should never be used on snow covered roads. There is more traction when roads are snow covered than roads with the mix applied. So, simply plow the roads with adequate pressure. This will save tax payers money, preserve infrastructure and protect the environment. More importantly, it creates better safety for all.

Thank you for your time to understand my concerns.

Sincerely,

Cathy Postlewait

P.O. Box 1032  
Gaylord. MI 49734  
231-585-7164



## Use Less Salt: City, County Seek To Find Safer, Cheaper Solutions For Icy Roads

By Craig Manning | May 10, 2021

Despite lingering cold temperatures, winter 2020-21 was warmer and less snowy than a standard northern Michigan winter. That milder weather helped the City of Traverse City and Grand Traverse County reduce road salt usage significantly – good news for everything from municipal budgets to the environment. But while both the city and county are working to minimize road salt usage more permanently, critics suggest that salting roads in northern Michigan has already had dire consequences for local bridges, roads, and watersheds – and that finding a way to eliminate salt usage entirely might be necessary to preserve infrastructure and protect environmental health.

Salt is used on roadways in the winter because it lowers the freezing point of water, thus preventing ice from forming as temperatures dip below 32 degrees. It's highly effective at keeping roads safer for drivers – but it's also highly corrosive and can cause spalling and scaling to concrete and other surfaces.

Over the past several years, local photographer John Robert Williams has used a photo series to document the destructive effects of salt, particularly to Traverse City bridges.

which Smith describes as “a rather good surrogate for total chloride in freshwater systems.” Preliminary data from those studies wasn’t severe enough to “raise any red flags, but it certainly showed that there were spikes in specific conductance over the winter months.”

“While we need more data to confirm if [elevated conductance] is a problem affecting aquatic life in our streams, we are certainly watching this issue,” Smith says.

Both the city and the county are taking steps to cut back on how much salt they use. According to Grand Traverse County Road Commission (GTCRC) Manager Brad Kluczynski, GTCRC has been tinkering with its road salt mixtures to maximize effectiveness, keep the salt where it’s meant to be, and cut down on total salt use. These days, what GTCRC trucks drop on snowy or icy roads includes more sand and more brine (a mixture of salt and water that helps salt stick to the road) than it did 5-10 years ago. During winter 2020-21, GTCRC dumped 7,392 tons of salt on the 1,200-plus miles of road it maintains, down from 12,229 tons in 2019-20 – and on the tails of five straight winters where the county’s salt usage exceeded 10,000 tons.

The City of Traverse City, meanwhile, started a new chapter this past winter by adding Beet Heet to its road management arsenal. Beet Heet is a liquid solution made up of chlorides and sugars – including sugar beet molasses – which municipalities can use to pre-wet road salt before laying it down on icy roads. According to Frank Dituri, director of the city’s Department of Public Services, the product is less corrosive and more biodegradable than salt, works at lower temperatures, sticks to the road better, and achieves the same safety effects at lower quantities.

Dituri says Beet Heet allowed the city to drop its salt application rate from more than 350 pounds per lane mile in winter 2019-20 to approximately 200 pounds per lane mile during winter 2020-21 – a 42 percent reduction. It also allowed for a 35 percent reduction in cost: The city spent an average of \$14.92 per lane mile for salt application in 2019-20, compared to \$9.69 per lane mile this past winter.

Dituri’s goal is to stop using salt altogether. “The industry isn’t there yet,” he says, but he’ll be keeping an eye out for new products and future innovations. In the meantime, he confirms the city will continue using Beet Heet next winter.

Still, Williams thinks it’s time for more drastic changes – especially as the city invests in <sup>t</sup>



Williams tells *The Ticker* he was inspired to track the issue in part because of his father, who worked at Dow Chemical.

"His job was to sell Dow deicers to the road commissions in the State of Michigan," Williams recalls. "And the whole reason that Dow Chemical got its start was, before refrigeration, people used salt to cure and preserve their meats. But as scientists do, they find different applications for things. And so they perfected this whole business about making salt for reducing the ice on roads. But as the engineers and the scientists and the chemical engineers told my dad – and he repeated this to me when I was a little kid: 'When they find out what this stuff does, there'll be hell to pay.'"

Williams says it's easy to observe "the ravages of salt" in Traverse City, from corroded metal bridge railings to pothole-ridden streets to browned and dead pine trees along local roads. He points to the West Front Street Bridge (pictured) as a good snapshot of what salt can do to infrastructure over time.

"And when you get underneath the bridge, you can see the concrete spalling underneath that arch," he says. "It's just amazing how much of that bridge is gone, just from salt being poured on it."

Salt spalling occurs when dissolved salt flows into porous building materials (such as concrete) or into existing crevices in surfaces and then crystallizes as the surface dries and the water evaporates. As the salt expands, it puts stress on the material, causing flakes (or "spall") to break away from the surface.

Salt can also pose a risk to local rivers and lakes – something the Watershed Center Grand Traverse Bay monitors actively. According to Heather Smith, Grand Traverse Baykeeper for the Watershed Center, road salts that make their way into local waters "can cause reproduction and growth issues in aquatic life, or even fatality." She says water quality monitoring programs throughout the midwestern and northeastern United States have been studying the impact of road salt on freshwater systems, with findings indicating elevated chloride levels in waters near urban areas.

The good news, Smith tells *The Ticker*, is that chloride levels in Grand Traverse Bay are generally low. The bad news is that the area also has several "urban streams" that may be spiking in terms of chloride. The Watershed Center is working with the Grand Traverse Freshwater Society and Trout Unlimited to monitor Kids Creek "for specific conductance,"†

# Otsego County Road Commission

Troy W. Huff, Chair  
Kathy M. Heinz, Vice Chair  
Michael D. Dipzinski, Commissioner  
Lukas A. Gordon, Commissioner  
Thomas H. Wagar, Commissioner

Kirk R. Harrier, Managing Director  
Rebecca J. Hilmert, Finance Mgr./Board Sec.  
Tianne N. Jones, Human Resources/Payroll Mgr.  
Scott A. Butkovich, Operations Mgr.

February 19, 2024

Ms. Cathy Postlewait  
P.O. Box 1032  
Gaylord, MI 49734

RE: Salt/Sand Usage

Dear Ms. Postlewait:

Otsego County Commissioner, Dana Wingo, submitted a communication you prepared regarding salt/sand usage to the Otsego County Board of Road Commissioners at their February 12<sup>th</sup> board meeting. The Road Commission Board discussed the various points in your communication and did not disagree that road salt does have negative corrosive effects. However, the Road Commission Board also identified that road salt is a necessary tool that all road commissions in Michigan use to provide reasonably safe travel to the motoring public during the winter months.

Before the 1940's, road salt was not widely used. During the winter months vehicles would don snow chains, and people generally accepted the conditions of the roads and adjusted their speeds or didn't drive at all. But as roads became ever more crucial to the economy, that changed. Increasingly, motorists now need and expect to be able to drive in all conditions during the winter safely. Unfortunately, no one's yet figured out a perfect alternative to road salt, which is still the cheapest and easiest tool available for winter maintenance.

Our staff continually monitors salt usage throughout the winter season to only use the amount necessary. Staff are also cognizant of the cost of the road salt, which is another reason we strive to minimize the amount used. The Otsego County Road Commission uses approximately 4,000 tons of salt that is mixed with sand throughout Otsego County during the winter season.

Our trucks are calibrated so only a specific prescribed amount of salt/sand mixture is placed on the roads. Trucks are loaded with two-thirds sand and one-third salt. Over the course of a mile, approximately two 5-gallon buckets of just road salt will be dispersed. When temperatures drop below 16 degrees, road salt becomes less effective, and the salt/sand mixture is only used on hills, curves, and intersections for additional traction. The Road Commission continues to work with state agencies to develop best practices, explore alternatives, and minimize salt usage.

The Otsego County Road Commission Board appreciates your comments and values input from the citizens of Otsego County. Please feel free to attend the Road Commission Board meetings which are held each month.

Sincerely,

*Kirk Harrier*

Kirk Harrier  
Managing Director  
Otsego County Road Commission

Cc: Otsego County Road Commission Board Members  
County Commissioner, Dana Wingo

**Payroll Gross for P/R of 2/8/2024**

PR #3

2/5/2024

1/20/2024 to 2/2/2024

Emp Nbr and Name	Regular Hours	Total Hours	Gross Amt	
269	Koronka,Brian	16.00	16.00	\$399.04
277	Fox,David	80.00	80.00	\$2,860.00
280	Kwapis,Earl	80.00	80.00	\$1,995.20
283	Sewell,Dennis	80.00	80.00	\$1,995.20
284	Kwapis Jr.,Stanley	80.00	112.00	\$3,459.84
287	Myers,Joseph	80.00	84.00	\$2,144.84
293	Samkowiak,Timothy	80.00	84.00	\$2,144.84
294	Mench,Steven	80.00	95.00	\$3,771.65
295	Boughner,Alan	80.00	83.00	\$2,107.43
299	Hinton,Justin	80.00	101.00	\$2,843.16
303	Coughlin Jr.,Thomas	80.00	80.00	\$1,995.20
307	Stiles,William	80.00	93.50	\$2,500.24
308	Wcisel,David	79.84	85.84	\$2,213.67
311	Wiley,James	80.00	112.00	\$3,459.84
314	Kucharek,Joseph	80.00	80.00	\$2,189.60
316	Jones,Tianne	80.00	80.00	\$2,115.20
317	Mitchell Jr.,Dennis	77.00	80.00	\$1,995.20
318	Huff,Troy	0.00	0.00	\$945.56
319	Prusakiewicz,Luke	68.00	80.00	\$1,995.20
321	Tracey,Benjamin	76.00	80.00	\$2,189.60
323	Falkenhagen,Robert	79.50	83.50	\$2,126.14
324	Dipzinski,Michael	0.00	0.00	\$816.08
326	Heinz,Kathy	0.00	0.00	\$824.12
327	Garlock,Cody	80.00	93.00	\$2,543.88
328	Harrier,Kirk	80.00	80.00	\$3,979.20
329	Gordon,Lukas	0.00	0.00	\$822.78
331	Boettner,Cary	75.50	80.00	\$2,109.60
335	Pettis,Charles	80.00	80.00	\$1,824.00
336	Hilmert,Rebecca	80.00	80.00	\$2,616.00
337	Johnson,Zachary	80.00	88.00	\$2,344.36
338	Coady,Patrick	80.00	80.00	\$1,995.20
341	Parr,Alex	80.00	80.00	\$1,995.20
342	Alexander,Alexis	80.00	80.00	\$1,995.20
343	Hendrick,Robert	80.00	80.00	\$2,109.60
344	Mayle,Michael	80.00	80.00	\$1,995.20
345	Butkovich,Scott	80.00	92.50	\$3,660.10
346	Ford,Logan	80.00	80.00	\$1,995.20
903	BANK,HORIZON	0.00	0.00	\$6,024.87
<b>Total of Employee checks:</b>		<b>2,551.84</b>	<b>2,743.34</b>	<b>\$87,097.24</b>

**Gross Pay by Fund:**

	Total
201	87,097.24
<b>Total</b>	<b>87,097.24</b>

Approved: February 12, 2024

---

Troy Huff, Chairman

**Payroll Gross for P/R of 2/22/2024**

PR #4

2/20/2024

2/3/2024 to 2/16/2024

Emp Nbr and Name	Regular Hours	Total Hours	Gross Amt
264 Huff III,Russell	8.00	8.00	\$199.52
269 Koronka,Brian	8.00	8.00	\$199.52
277 Fox,David	302.50	302.50	\$10,582.98
280 Kwapis,Earl	77.00	80.00	\$1,995.20
283 Sewell,Dennis	77.00	80.00	\$1,995.20
284 Kwapis Jr.,Stanley	80.00	112.00	\$3,455.84
287 Myers,Joseph	80.00	86.50	\$2,238.38
293 Samkowiak,Timothy	80.00	80.00	\$1,995.20
294 Mench,Steven	80.00	82.00	\$3,003.00
295 Boughner,Alan	80.00	83.50	\$2,126.14
299 Hinton,Justin	80.00	84.00	\$2,144.84
303 Coughlin Jr.,Thomas	80.00	83.00	\$2,107.43
307 Stiles,William	80.00	80.50	\$2,013.91
308 Wcisel,David	80.00	80.00	\$1,995.20
311 Wiley,James	80.00	112.00	\$3,459.84
314 Kucharek,Joseph	76.00	80.00	\$2,193.60
316 Jones,Tianne	80.00	80.00	\$2,115.20
317 Mitchell Jr.,Dennis	80.00	80.00	\$1,995.20
319 Prusakiewicz,Luke	77.84	92.84	\$2,479.93
321 Tracey,Benjamin	76.50	80.00	\$2,189.60
323 Falkenhagen,Robert	80.00	84.00	\$2,144.84
327 Garlock,Cody	80.00	80.00	\$1,995.20
328 Harrier,Kirk	80.00	80.00	\$3,979.20
331 Boettner,Cary	80.00	80.00	\$2,109.60
335 Pettis,Charles	80.00	80.00	\$1,824.00
336 Hilmert,Rebecca	80.00	80.00	\$2,616.00
337 Johnson,Zachary	80.00	88.50	\$2,313.20
338 Coady,Patrick	76.00	80.00	\$1,995.20
341 Parr,Alex	80.00	84.00	\$2,144.84
342 Alexander,Alexis	80.00	80.00	\$1,995.20
343 Hendrick,Robert	76.50	80.00	\$2,109.60
344 Mayle,Michael	80.00	83.50	\$2,126.14
345 Butkovich,Scott	80.00	87.50	\$3,290.48
346 Ford,Logan	79.50	80.00	\$1,995.20
903 BANK,HORIZON	0.00	0.00	\$5,646.97
<b>Total of Employee checks:</b>	<b>2,774.84</b>	<b>2,922.34</b>	<b>\$88,771.40</b>

**Gross Pay by Fund:**

	Total
201	88,771.40
<b>Total</b>	<b>88,771.40</b>

Approved: March 14, 2024

\_\_\_\_\_  
Troy Huff, Chairman



**Accounts Payable Prepay Report**  
2-27-2024 A/P

Invoice Nbr	Invoice Date	Description	Invoice Amount	Disc Taken	Amount To Pay
<b>Payment Type: EFTP</b>					
<b>Vendor: MERCHANT: Merchants Fleet</b>					
1047105-D01	1/29/2024	Damages	506.00	0.00	506.00
<b>Vendor Totals:</b>			<b>506.00</b>	<b>0.00</b>	<b>506.00</b>
<b>EFTP Grand Totals:</b>			<b>506.00</b>	<b>0.00</b>	<b>506.00</b>
			<b>1 EFTP Vendors</b>		
<b>Payment Type: Checks</b>					
<b>Vendor: ALERUS: Alerus Financial</b>					
<b>Check Nbr: 619825</b>					
Batch 266	2/8/2024	Employer Match 457	627.67	0.00	627.67
Batch 268	2/22/2024	Employer 457 Match	611.80	0.00	611.80
Batch 301	2/8/2024	Employer HCSP	2,499.52	0.00	2,499.52
Batch 302	2/22/2024	Employer Portion HCSP	2,499.72	0.00	2,499.72
<b>Check Totals:</b>			<b>6,238.71</b>	<b>0.00</b>	<b>6,238.71</b>
<b>Vendor: ATTMOBIL: AT&amp;T Mobility</b>					
<b>Check Nbr: 619826</b>					
287318351177X02	2/6/2024	Telephone/iPad	332.19	0.00	332.19
287339252526X02	2/6/2024	MDOT iPads	376.50	0.00	376.50
<b>Check Totals:</b>			<b>708.69</b>	<b>0.00</b>	<b>708.69</b>
<b>Vendor: BCN: Blue Care Network of MI</b>					
<b>Check Nbr: 619827</b>					
240370008594	2/6/2024	Health Insurance	45,202.10	0.00	45,202.10
<b>Check Totals:</b>			<b>45,202.10</b>	<b>0.00</b>	<b>45,202.10</b>
<b>Vendor: CHATERCO: Charter Communications</b>					
<b>Check Nbr: 619828</b>					
005403001020124	2/1/2024	Internet/Office Telephone	379.94	0.00	379.94
<b>Check Totals:</b>			<b>379.94</b>	<b>0.00</b>	<b>379.94</b>
<b>Vendor: CITYOFGA: City of Gaylord</b>					
<b>Check Nbr: 619829</b>					
MCCO-000669-001	2/15/2024	Sewer	80.05	0.00	80.05
<b>Check Totals:</b>			<b>80.05</b>	<b>0.00</b>	<b>80.05</b>
<b>Vendor: CONSUME: Consumers Energy</b>					
<b>Check Nbr: 619830</b>					
206436458413	2/20/2024	Office/Garage Electricity	2,054.16	0.00	2,054.16
<b>Check Totals:</b>			<b>2,054.16</b>	<b>0.00</b>	<b>2,054.16</b>
<b>Vendor: DELTADEN: Delta Dental</b>					
<b>Check Nbr: 619831</b>					
RIS0005511914	3/1/2024	Dental Insurance	3,517.23	0.00	3,517.23
<b>Check Totals:</b>			<b>3,517.23</b>	<b>0.00</b>	<b>3,517.23</b>
<b>Vendor: GREATLA: Great Lakes Energy</b>					
<b>Check Nbr: 619832</b>					
100269003	2/16/2024	TL @ Krys/McCoy	46.80	0.00	46.80
<b>Check Totals:</b>			<b>46.80</b>	<b>0.00</b>	<b>46.80</b>
<b>Vendor: HUMAN: Humana Insurance Co.</b>					
<b>Check Nbr: 619833</b>					
692915169	2/14/2024	Retiree Health Insurance	12,673.05	0.00	12,673.05
<b>Check Totals:</b>			<b>12,673.05</b>	<b>0.00</b>	<b>12,673.05</b>
<b>Vendor: MUTOMA: Mutual of Omaha</b>					
<b>Check Nbr: 619834</b>					
001660405993	2/16/2024	Life/AD&D/STD/LTD	3,210.48	0.00	3,210.48
<b>Check Totals:</b>			<b>3,210.48</b>	<b>0.00</b>	<b>3,210.48</b>

**Vendor: OCRC: Otsego County Road Commissi**

**Check Nbr: 619835**

1/20/24-2/26/24	2/25/2024	Healthcare Reimbursement	5,471.97	0.00	5,471.97
-----------------	-----------	--------------------------	----------	------	----------

<b>Check Totals:</b>			<b>5,471.97</b>	<b>0.00</b>	<b>5,471.97</b>
----------------------	--	--	-----------------	-------------	-----------------

**Vendor: STATE6: State of Michigan MDOT**

**Check Nbr: 619836**

CARE1591REIM24	2/4/2024	208352CON/23A0394	1,545.59	0.00	1,545.59
----------------	----------	-------------------	----------	------	----------

<b>Check Totals:</b>			<b>1,545.59</b>	<b>0.00</b>	<b>1,545.59</b>
----------------------	--	--	-----------------	-------------	-----------------

**Vendor: WEXBANK: WEX Bank**

**Check Nbr: 619837**

95034516	2/6/2024	Fuel	43.68	0.00	43.68
----------	----------	------	-------	------	-------

<b>Check Totals:</b>			<b>43.68</b>	<b>0.00</b>	<b>43.68</b>
----------------------	--	--	--------------	-------------	--------------

<b>Check Grand Totals:</b>		<b>13 Checks</b>	<b>81,172.45</b>	<b>0.00</b>	<b>81,172.45</b>
----------------------------	--	------------------	------------------	-------------	------------------

<b>Grand Totals:</b>		<b>14 EFTP Vendors/Checks</b>	<b>81,678.45</b>	<b>0.00</b>	<b>81,678.45</b>
----------------------	--	-------------------------------	------------------	-------------	------------------

Approved March 14, 2024

---

Troy Huff, Chairman

Accounts Payable  
3-14-2024 Board Meeting

CheckNbr	InvoiceNbr	InvoiceDate	Description	To Pay
MERS of Michigan	-1 00152780-7	2/29/2024	Retirement	\$70,828.23
Advance Electric	619838 58193-01	2/6/2024	Red DPST	\$11.81
AIRGAS USA, LLC	619839 5505354416	1/31/2024	Cylinder Rental	\$14.18
Alerus Financial	619840 Batch 305	3/7/2024	Employer Portic	\$2,499.52
	619840 Batch 270	3/7/2024	Employer 457 M	\$655.43
				<u>\$3,154.95</u>
BBC Distributing	619841 353955	2/22/2024	Janitorial Suppl	\$172.47
Blair Spray Foam Insulation	619842 0255	2/1/2024	Grouting Culver	\$7,992.00
Charter Communications	619843 005403001030	3/1/2024	Telephone/Inter	\$379.94
Cintas Corporation #729	619844 4183154513	2/13/2024	Uniforms/Rugs	\$158.93
	619844 4183874474	2/20/2024	Uniforms/Rugs	\$121.37
	619844 4184595566	2/27/2024	Uniforms/Floor	\$121.37
	619844 4185317503	3/5/2024	Uniforms/Floor	\$135.15
				<u>\$536.82</u>
Consumers Energy	619845 205279879696	2/29/2024	TL @ S Otsego	\$47.92
Detroit Salt Company	619846 SI24-25753	3/4/2024	Winter Salt Inve	\$7,700.75
	619846 SI24-25774	3/5/2024	Winter Salt Inve	\$7,986.61
	619846 SI24-25798	3/6/2024	Winter Salt Inve	\$7,607.22
	619846 SI24-25820	3/7/2024	Winter Salt Inve	\$15,664.16
				<u>\$38,958.74</u>
Dornbos Sign, Inc.	619847 74502	2/26/2024	Road Name Sig	\$684.29
DTE Energy	619848 9100 208 4696	2/26/2024	Heat	\$3,224.67
Electrical Terminal Service, Inc.	619849 1491806-00	2/26/2024	Cable Ties	\$135.90
	619849 1491805-00	2/26/2024	Work Lights/Ca	\$237.62
	619849 1491805-01	3/4/2024	Work Floodlam	\$191.68
				<u>\$565.20</u>
ELMIRA OCCUPATIONAL HEALTH & MEDICINE	619850 00218797-00	2/12/2024	CDL Physical	\$100.00
	619850 00219635-00	2/29/2024	DOT Physical	\$100.00
				<u>\$200.00</u>
First National Bank of Omaha	619851 1408	2/27/2024	D. Fox Card	\$3,413.39
	619851 8324	2/27/2024	R. Hilmert Card	\$937.47
	619851 4288	2/27/2024	S. Butkovich Ca	\$465.78
	619851 5602	2/27/2024	K. Harrier Card	\$28.67
				<u>\$4,845.31</u>
Gaylord Machine & Fabrication, LLC	619852 1286-14601	2/28/2024	Plow Pin Stock	\$351.01

GFL Environmental			
619853	0064955624	2/29/2024 Trash Pickup	\$145.00
619853	0064955654	2/29/2024 Trash Removal	\$208.35
			<u>\$353.35</u>
GFL Environmental			
619854	LQ02126651	2/13/2024 Waste Water D	\$1,552.85
619854	LQ02137863	2/21/2024 Waste Water D	\$1,570.40
			<u>\$3,123.25</u>
Joe Nedow			
619855	2024-02	2/29/2024 Accounting Sup	\$6,175.00
Johnson Oil Company			
619856	CP-010932	2/29/2024 Fuel	\$34,151.59
Lawson Products, Inc.			
619857	9311337146	2/28/2024 HYD Fitting, Ru	\$368.13
Line-X			
619858	9237	2/22/2024 Floor Mats, Rur	\$1,703.00
619858	9244	2/28/2024 Truck Bed Rails	\$429.00
			<u>\$2,132.00</u>
WEX BANK			
619859	95168465	2/15/2024 Fuel	\$27.87
Marcor Technologies, LLC			
619860	60431	2/27/2024 Microsoft 365 A	\$108.00
Michigan CAT			
619862	PD15825053	3/4/2024 Seal, Ring	\$40.40
619862	PD15825058	3/4/2024 Glass	\$37.74
619862	PD15825054	3/4/2024 Seal	\$4.91
619862	PD15825057	3/4/2024 Converter	\$1,423.28
619862	PD15825051	3/4/2024 Seal, Grommet	\$111.93
619862	PD15825056	3/4/2024 Plate	\$7.98
619862	PD15835120	3/6/2024 Mirror	\$410.29
619862	PD15835118	3/6/2024 Pump	\$1,255.82
619862	PD15835119	3/6/2024 Muffler	\$1,311.06
619862	SD15828757	3/5/2024 Solenoid Repai	\$1,057.67
			<u>\$5,661.08</u>
Mid-States Bolt & Screw Co.			
619863	32603499	2/13/2024 Hex Screws	\$25.02
619863	32602387	2/9/2024 Philips Screws	\$1.24
619863	32601681	2/9/2024 Plow Bolts	\$35.91
619863	32607847	2/20/2024 Plow Bolts	\$51.69
619863	32607870	2/20/2024 Plow Bolts	\$37.43
619863	32611498	2/26/2024 Plow Bolt	\$104.27
			<u>\$255.56</u>
Michigan Kenworth, LLC			
619864	022P177708	3/1/2024 Terminal	\$35.46
NEW CENTURY SIGNS			
619865	65726	3/5/2024 2-Sided Signs v	\$80.00
Otsego County Road Commission			
619866	2/1/2024-2/29/2	2/29/2024 HRA Reimburs	\$70.00
619866	2/27/24-3/4/24	3/3/2024 HRA Reimburs	\$3,388.50
			<u>\$3,458.50</u>
ODS THE DOOR SPECIALISTS			
619867	22021	2/15/2024 Receivers/Tran	\$9,570.00
PURITY CYLINDER GASES, INC.			
619868	1900370	2/26/2024 Welding Suppli	\$353.76
619868	1900468	2/26/2024 Welding Suppli	\$301.52

619868 1901172	2/27/2024 Welding Supplie	\$73.02
		<u>\$728.30</u>
QUALITY PLUMBING AND MECHANICAL INC.		
619869 16145	2/29/2024 HVAC Service	\$2,734.10
RIETH-RILEY CONSTRUCTION CO., INC.		
619870 5306707	2/13/2024 Coldpatch Inve	\$7,175.88
ROWLEYS WHOLESALE		
619871 1426278-00	2/22/2024 Hose Clamps, l	\$454.01
SCIENTIFIC BRAKE & EQUIP.		
619873 0202119494	2/19/2024 Internal Seat Di	\$29.55
619873 0202120317	2/20/2024 Lights, Centerr	\$332.50
619873 0202119822	2/9/2024 Ratchet Straps	\$112.22
619873 0202120359	2/22/2024 Amber Lights	\$6.68
619873 0202119444	3/4/2024 Floor Mats	\$950.00
619873 0202121157	3/5/2024 Elbows	\$39.03
619873 0202121068	3/5/2024 Tubing	\$44.71
619873 0202121096	3/5/2024 ABS Valve	\$180.44
619873 0202121158	3/5/2024 Parts Return	<u>(\$29.46)</u>
		\$1,665.67
Shine Cleaning Service Inc.		
619874 781	3/1/2024 Rest Area Clea	\$5,739.57
SHORELINE POWER SERVICES, INC		
619875 21793	2/13/2024 Phone Labels, l	\$98.00
STANDARD ELECTRIC CO.		
619876 22131331-00	3/7/2024 Faucet	\$103.00
Stoops Freightliner Western Star		
619877 X316008957:01	2/22/2024 HVAC Control	\$376.61
619877 X316008323:02	2/23/2024 Pitman Arm	\$226.37
619877 X316009207:01	3/1/2024 LED Lamp Mar	\$183.52
619877 X316009200:01	3/5/2024 Step Supports	<u>\$1,088.56</u>
		\$1,875.06
TED FESTERLING LLC		
619878 10946	2/21/2024 Sander Chains	\$4,901.22
TRUCK & TRAILER SPECIALTIES		
619881 BSO023517	2/20/2024 Cross Auger	\$5,802.85
619881 BJO002678	2/8/2024 Front Plow	\$11,320.20
619881 BJO002679	2/8/2024 Front Plow	\$11,320.20
619881 BJO002680	2/8/2024 Front Plow	\$8,088.00
619881 BSO023496	2/15/2024 Lights, Backrac	\$1,951.25
619881 BSO023401	2/2/2024 Automatic Nozz	\$1,127.35
619881 BSO023500	3/7/2024 Strobe Lights	\$2,184.16
619881 BSO023602	3/7/2024 Bearing	\$260.46
619881 BSO023448	3/6/2024 Fuel Tank	\$2,440.38
619881 BRO008171	2/22/2024 Controller Insta	\$1,982.94
619881 BSO023559	2/21/2024 Spreader Parts	\$876.42
619881 BSO023502	2/16/2024 Light Bar Moun	\$225.28
619881 BSO023499	2/20/2024 Go Lights	\$288.86
619881 BSO023601	2/27/2024 Strobe Lights	\$213.63
619881 BSO023694	3/7/2024 Battery Disconr	<u>\$507.78</u>
		\$48,589.76
US Bank Equipment Finance		
619882 523591881	2/28/2024 Copier	\$324.03
VALLEY TRUCK PARTS, INC.		
619883 3-1224899	2/23/2024 Driveline Bolts	\$13.44
619883 3-1224939	3/1/2024 Seat, Headlight	<u>\$1,344.02</u>



	\$1,357.46	\$0.00		\$1,357.46
VESCO OIL CORPORATION				
619884 5536118-00			2/21/2024 Parts Washer €	\$101.25
WILBER AUTOMOTIVE				
619886 319700			2/14/2024 Trailer Wire	\$64.00
619886 319629			2/13/2024 Screw Mt Base	\$8.81
619886 319696			2/14/2024 Hub Bearing	\$177.82
619886 320274			2/21/2024 Oil	\$52.48
619886 320410			2/22/2024 Loom Wire	\$56.98
619886 320901			2/29/2024 Lug Nuts	\$19.50
619886 320640			2/26/2024 Core Return	(\$280.54)
619886 320600			2/26/2024 Calipers	\$280.54
619886 320725			2/27/2024 Switch	\$18.99
619886 321399			3/6/2024 Taillight Socket	\$12.57
619886 321169			3/4/2024 Grease Fitting	\$9.20
				<u>\$420.35</u>

Grand Total: \$273,734.99

Approved March 14, 2024

\_\_\_\_\_  
Troy Huff, Chairman

## Accounts Payable Check Register

Low And High Check Date: 02/01/2024 - 02/29/2024  
 Show Vendor Codes? (Y/N): N - Do Not Show Vendor Codes  
 Show Discount And Pay Amounts? (Y/N): N - Do Not Show Discount And Pay Amounts  
 Show Payment Totals By Fund? (Y/N): Y - Show Payment Totals By Fund

Check Nbr	Check Date	Vendor Name	Net Amount
<b>Electronic Funds Transfer Payments</b>			
EFTP	02/12/2024	Internal Revenue Service	59.57
EFTP	02/27/2024	Merchants Fleet	506.00
EFTP	02/12/2024	MERS of Michigan	71,982.76
<b>Electronic Funds Transfer Payments Totals:</b>		<b>3 Payments Listed</b>	<b>72,548.33</b>
<b>Regular Checks Payments</b>			
619764	02/12/2024	Advance Electric	20.36
619765	02/12/2024	Alerus Financial	3,166.30
619766	02/12/2024	Alma Tire Service, Inc.	96.50
619767	02/12/2024	Alta Construction Equipment	2,639.45
619768	02/12/2024	BBC Distributing	150.56
619769	02/12/2024	Beaver Research Company	351.19
619770	02/12/2024	Black River Auto Glass	745.00
619771	02/12/2024	Scott Butkovich	177.04
619772	02/12/2024	Cintas Corporation #729	623.69
619773	02/12/2024	Consumers Energy	2,330.72
619774	02/12/2024	CRASIF	5,407.00
619775	02/12/2024	Dornbos Sign, Inc.	572.72
619776	02/12/2024	DTE Energy	4,399.57
619777	02/12/2024	Electrical Terminal Service, Inc.	331.42
619778	02/12/2024	ELMIRA OCCUPATIONAL HEALTH & MEDICINE	100.00
619779	02/12/2024	First National Bank of Omaha	2,318.64
619780	02/12/2024	Gaylord Collision, Inc.	650.00
619781	02/12/2024	Gaylord Machine & Fabrication, LLC	292.20
619782	02/12/2024	GFL Environmental	353.35
619783	02/12/2024	GFL Environmental	7,862.80
619784	02/12/2024	Gov-Pay	21.90
619785	02/12/2024	Grand Traverse Mobile Communications	565.40
619786	02/12/2024	Humana Insurance Co.	12,673.05
619787	02/12/2024	Huron Engineering and Surveying, Inc.	8,674.00
619788	02/12/2024	Exit 76 Corporation	51,581.79
619789	02/12/2024	Joe Nedow	2,090.00
619790	02/12/2024	JX Truck Center	58.99
619791	02/12/2024	KM International	272.38
619792	02/12/2024	LAFONTAINE CHRYSLER DOGE JEEP RAM OF LANSI	151,572.00
619793	02/12/2024	Lawson Products, Inc.	791.47
619794	02/12/2024	Marcor Technologies, LLC	972.00
619795	02/12/2024	Matco Tools	1,042.00
619796	02/12/2024	Michigan CAT	58,809.00
619797	02/12/2024	MID-North Printing, Inc.	42.00
<b>619798 *</b>	02/12/2024	Mid-States Bolt & Screw Co.	1,971.42
<b>619799 *</b>	02/12/2024	Mid-States Bolt & Screw Co.	39.43
		<b>* Totals For Multi Part Check Nbr: 619799:</b>	<b>2,010.85</b>
619800	02/12/2024	Michigan Kenworth, LLC	1,326.22

Check Nbr	Check Date	Vendor Name	Net Amount
619801	02/12/2024	Northern Energy, Inc.	2,335.89
619802	02/12/2024	Otsego County Road Commission	455.98
619803	02/12/2024	ODS THE DOOR SPECIALISTS	557.80
619804	02/12/2024	OReilly Auto Parts	58.88
619805	02/12/2024	PROTECTION ONE/ADT	298.19
619806	02/12/2024	RONS AUTO & WRECKER	292.00
<b>619807 *</b>	02/12/2024	SCIENTIFIC BRAKE & EQUIP.	1,151.46
<b>619808 *</b>	02/12/2024	SCIENTIFIC BRAKE & EQUIP.	1,055.52
<b>* Totals For Multi Part Check Nbr: 619808:</b>			<b>2,206.98</b>
619809	02/12/2024	Shine Cleaning Service Inc.	5,739.57
619810	02/12/2024	Snethkamp	10,912.65
<b>619811 *</b>	02/12/2024	Stoops Freightliner Western Star	4,737.37
<b>619812 *</b>	02/12/2024	Stoops Freightliner Western Star	279.20
<b>619813 *</b>	02/12/2024	Stoops Freightliner Western Star	917.68
<b>* Totals For Multi Part Check Nbr: 619813:</b>			<b>5,934.25</b>
619814	02/12/2024	TED FESTERLING LLC	3,429.06
<b>619815 *</b>	02/12/2024	TRUCK & TRAILER SPECIALTIES	3,797.86
<b>619816 *</b>	02/12/2024	TRUCK & TRAILER SPECIALTIES	5,340.84
<b>619817 *</b>	02/12/2024	TRUCK & TRAILER SPECIALTIES	5,837.02
<b>* Totals For Multi Part Check Nbr: 619817:</b>			<b>14,975.72</b>
619818	02/12/2024	US Bank Equipment Finance	351.50
619819	02/12/2024	VALLEY TRUCK PARTS, INC.	343.90
619820	02/12/2024	WCISEL CONSTRUCTION INC.	720.00
619821	02/12/2024	Weller Truck Parts	2,020.07
<b>619822 *</b>	02/12/2024	WILBER AUTOMOTIVE	534.18
<b>619823 *</b>	02/12/2024	WILBER AUTOMOTIVE	413.05
<b>* Totals For Multi Part Check Nbr: 619823:</b>			<b>947.23</b>
619824	02/12/2024	ZAREMBA EQUIPMENT, INC.	2,274.43
619825	02/27/2024	Alerus Financial	6,238.71
619826	02/27/2024	AT&T Mobility	708.69
619827	02/27/2024	Blue Care Network of MI	45,202.10
619828	02/27/2024	Charter Communications	379.94
619829	02/27/2024	City of Gaylord	80.05
619830	02/27/2024	Consumers Energy	2,054.16
619831	02/27/2024	Delta Dental	3,517.23
619832	02/27/2024	Great Lakes Energy	46.80
619833	02/27/2024	Humana Insurance Co.	12,673.05
619834	02/27/2024	Mutual of Omaha	3,210.48
619835	02/27/2024	Otsego County Road Commission	5,471.97
619836	02/27/2024	State of Michigan MDOT	1,545.59
619837	02/27/2024	WEX Bank	43.68

**Regular Checks Payments Totals: 74 Payments Listed 460,118.11**

**All Payments Grand Totals: 77 Payments Listed 532,666.44**

<b>Payment Totals By Fund:</b>	<b>Fund</b>	<b>Net Amount</b>
--------------------------------	-------------	-------------------

Check Nbr    Check Date    Vendor Name    Net Amount

---

Fund	Net Amount
201	532,666.44
<b>Grand Totals</b>	<b>532,666.44</b>



# Otsego County Road Commission Agenda Item Report

---

**FROM:** Kirk Harrier, Managing Director  
**MEETING DATE:** March 14, 2024  
**AGENDA ITEM:** 8. A  
**SUBJECT:** 2017 OCRC Waste Hauler Policy

## **DESCRIPTION**

In 2017 the Road Commission Board adopted the attached policy concerning waste haulers operating on the roadways in Otsego County. This policy allows waste haulers to obtain a permit from the Road Commission to operate in Otsego County when weight restrictions are in place above the required weight limits if certain procedures are followed by the companies. Staff have reached out to the other road commissions in our area and they do not provide for a permit of this nature. Due to the continued deterioration of the roadways in Otsego County, staff thought it would be prudent to revisit this policy with the Board and determine if the Board wishes to keep it in place, amend it or rescind it.

## **BUDGET ACTION REQUIRED**

N/A

## **LEGAL REVIEW**

N/A

## **SAMPLE MOTION**

Option 1 Take no action at this time, no motion would be necessary.

Option 2 Amend the OCRC Waste hauler Policy as follows

Option 2 Rescind the OCRC Waste Hauler Policy.



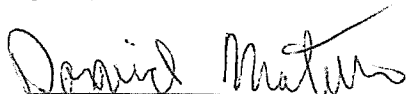
<b>OTSEGO COUNTY ROAD COMMISSION</b>	<b>GENERAL ADMINISTRATION</b> <b>All Employees</b>				
<b>TITLE:</b>  <b>Waste Haulers Permit Policy</b>	RESOLUTION NUMBER:	SUPERCEDE	EFFECTIVE DATE:  10/19/2017	SUPERCEDE	POLICY NUMBER:  P17-23

**Waste Haulers Permit Policy**  
Adopted October 19, 2017

Otsego County Road Commission has set forth the following regulations and/or procedures for any Waste Haulers permits and shall include the following:

1. Rear load trucks from 6 yards to 16 yards must have a minimum of 2 axles including the steering axle.
2. Rear load trucks from 16 yards to 20 yards must have a minimum of 3 axles including the steering axle.
3. Rear load trucks from 25 yards to 32 yards must have a minimum of 4 axles including the steering axle.
4. Front load trucks 20 yards or less must have a minimum of 3 axles including the steering axle.
5. Front load trucks 20 yards or more must have a minimum of 4 axles including the steering axle.
6. During weight restrictions, rear load trucks will operate with the ejection panels always in the forward position and all axles down. Trucks are to stay off the shoulders of the road when driving or stopped whenever possible. Rear load trucks are not to exceed 35 miles per hour on all restricted roads.
7. When approaching cul-de-sacs, waste hauler drivers are required to make a large sweeping turn as to reduce asphalt damage.
8. During weight restrictions, front load trucks will operate with an ejection panel always in the rear position and all axles down.
9. Roll off trucks will have the minimum of 4 axles including the steering axle.

Permit fees shall be \$200.00 per power unit per year and must be purchased prior to operating any truck during annual weight restrictions (frost laws) and must be purchased on an annual basis.

  
\_\_\_\_\_  
David Matelski, Chairman



# Otsego County Road Commission Agenda Item Report

---

**FROM:** Scott Butkovich, Operations Manager  
**MEETING DATE:** March 14, 2024  
**AGENDA ITEM:** 8. B  
**SUBJECT:** Bid Award (Sparr Road – Wolf Rd. to Tin Shanty Rd.)

## **DESCRIPTION**

Engineer bid award recommendation for the Sparr Rd crush & shape project to Payne and Dolan, Inc. in the amount of \$668,773.00. Approximate length, 2 miles. This project has cost share agreements in place with Dover and Charlton Townships for \$150,000 and \$155,000 respectively, (\$305,000) total.

## **BUDGET ACTION REQUIRED**

N/A

## **LEGAL REVIEW**

N/A

## **SAMPLE MOTION**

Motion to **approve/deny** engineers bid award recommendation for the Sparr Road (Wolf Rd. to Tin Shanty Rd.) project in the amount of \$668,773.00 to Payne and Dolan, Inc.



# Otsego County Road Commission

## Agenda Item Report

---

**FROM:** Scott Butkovich, Operations Manager

**MEETING DATE:** March 14, 2024

**AGENDA ITEM:** 8.C

**SUBJECT:** Bid Award (Highlands Project – Trillium Trl, Edelweiss Trl, Bagley St, Timberlane Trl)

### **DESCRIPTION**

Engineer bid award recommendation for the Highlands Project crush & shape project to Payne and Dolan, Inc. in the amount of \$373,698.50. Approximate length, 1.6 miles. This project has cost share agreements in place with Otsego Lake Township for \$137,500.

### **BUDGET ACTION REQUIRED**

N/A

### **LEGAL REVIEW**

N/A

### **SAMPLE MOTION**

Motion to **approve/deny** engineers bid award recommendation for the Highlands Project in the amount of \$373,698.50 to Payne and Dolan, Inc.



# Otsego County Road Commission

## Agenda Item Report

---

---

**FROM:** Scott Butkovich, Operations Manager

**MEETING DATE:** March 14, 2024

**AGENDA ITEM:** 8. D

**SUBJECT:** Bid Award (Michaywe Project – Bob White Way, Snowmass Ct, Golden Elk Ct)

### **DESCRIPTION**

Engineer bid award recommendation for the Michaywe Project wedge & overlay project to Payne and Dolan, Inc. in the amount of \$322,562.80. Approximate length, 1.6 miles. This project has cost share agreements in place with Otsego Lake Township for \$187,500.

### **BUDGET ACTION REQUIRED**

N/A

### **LEGAL REVIEW**

N/A

### **SAMPLE MOTION**

Motion to **approve/deny** engineers bid award recommendation for the Michaywe Project in the amount of \$322,562.80 to Payne and Dolan, Inc.



# Otsego County Road Commission Agenda Item Report

---

**FROM:** Scott Butkovich, Operations Manager  
**MEETING DATE:** March 14, 2024  
**AGENDA ITEM:** 8. E  
**SUBJECT:** Bid Award (Wilkinson Road over South Branch Pigeon River Culvert)

**DESCRIPTION**

Engineer bid award recommendation for the Wilkinson Road over South Branch Pigeon River Culvert project to MacArthur Construction in the amount of \$140,000.00. This project has grant funding totaling \$108,193.00.

**BUDGET ACTION REQUIRED**

N/A

**LEGAL REVIEW**

N/A

**SAMPLE MOTION**

Motion to **approve/deny** engineers bid award recommendation for the Wilkinson Road over South Branch Pigeon River Culvert project in the amount of \$140,000.00 to MacArthur Construction.





# Otsego County Road Commission

## Agenda Item Report

---

**FROM:** Kirk Harrier, Managing Director  
**MEETING DATE:** March 14, 2024  
**AGENDA ITEM:** 8. F  
**SUBJECT:** OCRC Gravel Pit Management Analysis

### **DESCRIPTION**

The OCRC owns 6 gravel pits in various locations in Otsego County. Their locations are noted below. Staff would like to discuss with the Board the future of these gravel pits and determine if there is a desire to explore a more in-depth pit management analysis/plan and if so a timeline and budget for such an endeavor.

**Decker Pit** – Located on the north side of M-32, approximately 0.80 miles east of Turtle Lake Rd, Chester TWP, Section 15, T30N-R2W.

*Internal Knowledge: Some existing clay, large amount of standing timber if rock is found on west and north side of property.*

**Old State Pit (Otsego Lake Pit)** – Located on the south side of Old State Rd, approximately 0.40 miles east of Old Hwy 27 South, Otsego Lake TWP, Section 17, T29N-R3W.

*Internal Knowledge: No known clay, no known rock remaining. Some value in standing timber.*

**Turtle Lake Pit** – Located on the north side of Turtle Lake Rd, approximately 0.90 miles south of M-32, Chester TWP, Section 21, T30N-R2W.

*Internal Knowledge: No known clay, good thin layer of known rock below 8-10' of overburden, approximately 100 acres of standing timber on the west portion of the property.*

**Webster Pit** – Located at the intersection of Webster Rd and Theisen Rd, Elmira TWP, Section 8, T31N-R4W.

*Internal Knowledge: Mined many years ago and is now all overgrown except for the property on the west side of Webster Rd – this portion of the property is untouched with standing timber.*

**Winters Pit (Rush Pit)** – Located on the south side of Winters Rd, approximately 0.30 miles west of Old Hwy 27 North, Livingston TWP, Section 3, T31N-R3W.

*Internal Knowledge: Some known existing clay but very "sandy", no known remaining stone, standing red pine timber on the south half of the property.*

**Wolf Pit** – Located on the east side of Marquardt Rd, approximately 0.75 miles north of Sparr Rd, Dover TWP, Section 29, T31N-R2W.

*Internal Knowledge: Some known existing clay but very "sandy", vein of stone in the NW portion of the property with 4-5' of overburden.*

**BUDGET ACTION REQUIRED**

N/A

**LEGAL REVIEW**

N/A

**SAMPLE MOTION**

N/A



3205 US-23 South  
 Alpena, MI 49707  
 Ph: 989-356-6375  
 Fax: 989-354-8286

March 11, 2024

Otsego County Road Commission  
 Mr. Kirk Harrier, Manager  
 PO Box 537  
 669 W McCoy Rd  
 Gaylord, MI 49734

**Re: *Project Award Recommendations***

Dear Mr. Harrier,

On March 11, 2024 at 9:30 am bids were received at the Otsego County Road Commission for the projects listed below. Huron has reviewed the bid tabs for each project and recommends award of each project as noted below. Bid Comparison Reports are attached for each project for your review.

**Wilkinson Road over Pigeon River Otsego County**

MacArthur Construction, Inc.	\$140,000.00
Elmer's Crane and Dozer, Inc.	\$155,000.00
Miller Contracting, LLC	\$175,810.00
Payne & Dolan, Inc.	\$201,450.00
M & M Excavating Company	\$280,724.66

All bidders have a history of successful project completion with similar projects; we recommend award of this project to the low bidder MacArthur Construction, Inc.

**Sparr Road**

Payne & Dolan, Inc.	\$668,773.00
J&N Construction, LLC	\$747,774.50
Miller Contracting, LLC.	\$754,084.70
M&M Excavating Company	\$811,429.20
Rieth-Riley Construction Co, Inc.	\$840,993.50

All bidders have a history of successful project completion with similar projects; we recommend award of this project to the low bidder Payne & Dolan, Inc.





3205 US-23 South  
Alpena, MI 49707  
Ph: 989-356-6375  
Fax: 989-354-8286

**Highlands Subdivision**

Payne & Dolan, Inc.	\$373,698.50
Rieth-Riley Construction Co	\$443,190.00
J&N Construction, LLC	\$453,778.17
MacArthur Construction, Inc.	\$464,820.00
Miller Contracting, LLC.	\$478,144.00

All bidders have a history of successful project completion with similar projects; we recommend award of this project to the low bidder Payne & Dolan, Inc.

**Michawaye Otsego County**

Payne & Dolan, Inc.	\$322,562.80
Rieth-Riley Construction Co, Inc.	\$357,608.00

All bidders have a history of successful project completion with similar projects; we recommend award of this project to the low bidder Payne & Dolan, Inc.

Sincerely,  
**Huron Engineering and Surveying, Inc.**

A handwritten signature in black ink that reads "Rebecca E Rivard". The signature is written in a cursive style and is positioned above a horizontal line.

Rebecca Rivard, P.E.  
Project Engineer

# Otsego County Road Commission

Troy W. Huff, Chair  
 Kathy M. Heinz, Vice Chair  
 Michael D. Dipzinski, Commissioner  
 Lukas A. Gordon, Commissioner  
 Thomas H. Wagar, Commissioner

Kirk R. Harrier, Managing Director  
 Rebecca J. Hilmert, Finance Mgr./Board Sec.  
 Tianne N. Jones, Human Resources/Payroll Mgr.  
 Scott A. Butkovich, Operations Mgr.

## MEMO

Date: March 14, 2024  
 To: Otsego County Road Commission Board  
 From: Kirk Harrier, Managing Director  
 Re: 2024 OCRC Project Summary

### CRUSH & SHAPE (Contract)

2.80 miles, Old State Rd - E Opal Lake Rd to Turtle Lake, Chester TWP  
 2.00 miles, Sparr Rd - Sawyer Rd to Wolf Rd, Charlton TWP  
 2.00 miles, Sparr Rd - Wolf Rd to Tin Shanty Rd, Dover/Charlton TWP  
 3.00 miles, Sparr Rd - Dover to Sawyer Rd, Dover TWP  
 0.71 miles, Patrick Dr, Greentree Dr, Pinetum Ln, Bagley TWP  
 1.50 miles, Sturgeon Valley Rd - Fontinalis Rd east 1.5 mile to "Green Timbers" Area, Corwith TWP  
 1.67 miles, Highlands Area (Trillium Trl, Edelweiss Trl, Bagley St, Timberlane Trl), Otsego Lake TWP  
 1.50 miles, Sparr Rd - Marquardt Rd to Dover Rd (LAP), Dover TWP

### WEDGE & OVERLAY (Contract)

1.60 miles, Michaywe (Bob White Way, Snowmass Ct, Golden Elk Ct), Otsego Lake TWP  
 0.20 miles, Lake Manuka (fill in), Hayes TWP

### CULVERT REPLACEMENT (Contract and OCRC)

0.37 miles, Wilkinson Rd over Duck Creek (#PG110), Dover TWP  
 1.50 miles, Sparr Rd - Marquardt Rd to Dover Rd (LAP), Dover TWP – 7 total culverts, OCRC complete in-house

### GRAVEL ROAD REHAB (OCRC)

1.50 miles, Frackowiak Rd/ Skop Rd – Alba Rd to Mt Jack Rd, Elmira TWP  
 2.00 miles, Tittabawassee Trail – Mancelona Rd to Mt Fredrick Rd, Hayes TWP

### APPROACH IMPROVEMENTS (Contract)

Approach at Badgley St and Old HWY 27 North, Corwith TWP  
 Approach at Airport St and Huffman Lake Rd, Corwith TWP  
 Approach at Badgley St and Cherwinski Rd, Corwith TWP  
 Shoulder Widening at Whitmarsh and Old HWY 27 North, Corwith TWP

### CRACK SEALING (OCRC)

4.30 miles, Manuka Lake Rd, Hayes & Bagley TWP  
 2.00 miles, Kassuba Rd - Krys Rd to M-32, Bagley TWP  
 3.77 miles, Camp 10 Rd - M-32 to County Line, Elmira TWP  
 2.00 miles, Heatherton Rd - M-32 to Waters Rd, Charlton TWP  
 1.60 miles, Meridian Line Rd - Heatherton Rd to County Line, Charlton TWP  
 0.87 miles, Old 27 North - Roundabout to Congdon Rd, Livingston TWP  
 3.30 miles, Mt Jack - M-32 to Alba Rd, Elmira TWP

**Otsego County Road Commission**  
**MTF COMPARISON (Includes Snow Funds, Reimbursed Engineering Fees)**  
**For Calendar Year Ending 12/31/2023**

10.D

Month	2023	2022	2021	2020	2019	2018	2017	2016	2015	2023 + (-)	% Change
January	\$622,850.41	\$593,353.49	\$574,401.56	\$574,774.41	\$538,379.39	\$490,104.69	\$390,160.67	\$321,869.31	\$310,243.81	\$29,496.92	4.97%
February	\$632,255.99	\$632,457.35	\$570,732.78	\$617,395.30	\$510,402.80	\$493,989.46	\$455,570.44	\$384,810.44	\$381,737.86	-\$201.36	-0.03%
March	\$593,772.93	\$575,363.14	\$539,585.23	\$475,901.84	\$526,923.30	\$471,139.06	\$411,992.14	\$325,540.83	\$299,959.85	\$18,409.79	3.20%
April	\$562,332.71	\$560,481.55	\$575,876.65	\$393,985.28	\$450,756.80	\$429,606.59	\$406,411.01	\$312,258.71	\$317,903.60	\$1,851.16	0.33%
May	\$619,941.15	\$510,827.52	\$512,183.97	\$342,370.15	\$508,546.35	\$472,952.47	\$427,827.98	\$304,005.07	\$265,617.04	\$109,113.63	21.36%
June	\$608,893.80	\$558,665.93	\$558,305.39	\$474,874.11	\$475,931.51	\$434,296.57	\$425,976.07	\$323,449.21	\$319,366.83	\$50,227.87	8.99%
July	\$547,335.20	\$487,410.63	\$481,649.26	\$478,387.21	\$439,213.70	\$410,646.53	\$384,860.23	\$248,094.07	\$280,730.05	\$59,924.57	12.29%
August	\$579,431.44	\$561,092.90	\$593,695.30	\$579,216.00	\$482,547.69	\$447,571.55	\$427,215.93	\$326,316.22	\$326,612.70	\$18,338.54	3.27%
September	\$556,303.94	\$601,029.67	\$604,028.14	\$525,737.94	\$511,558.85	\$420,077.12	\$434,196.76	\$313,741.07	\$317,455.60	-\$44,725.73	-7.44%
October	\$534,580.55	\$462,674.17	\$427,576.86	\$453,396.08	\$444,876.52	\$479,471.07	\$390,449.79	\$251,924.95	\$285,580.76	\$71,906.38	15.54%
November	\$569,651.09	\$521,034.00	\$427,576.86	\$460,489.59	\$449,835.16	\$414,508.44	\$375,345.55	\$329,867.86	\$292,065.21	\$48,617.09	9.33%
December	\$783,401.92	\$750,365.33	\$680,865.37	\$524,167.55	\$538,568.32	\$332,726.17	\$398,345.79	\$328,757.47	\$288,929.63	\$33,036.59	4.40%

<b>Totals</b>	<b>\$7,210,751.13</b>	<b>\$6,814,755.68</b>	<b>\$6,546,477.37</b>	<b>\$5,900,695.46</b>	<b>\$5,877,540.39</b>	<b>\$5,297,089.72</b>	<b>\$4,928,352.36</b>	<b>\$3,770,635.21</b>	<b>\$3,686,202.94</b>	<b>\$395,995.45</b>	<b>76.22%</b>
---------------	-----------------------	-----------------------	-----------------------	-----------------------	-----------------------	-----------------------	-----------------------	-----------------------	-----------------------	---------------------	---------------

Engineering Funds received in June/paid in August (\$10,000)

Snow Funds received in October/paid in December

- (2015 Snowfunds \$229,195.07)
- (2016 Snowfunds \$238,533.88)
- (2017 Snowfunds \$241,593.93)
- (2018 Snowfunds \$315,151.81)
- (2019 Snowfunds \$347,614.46)
- (2020 Snowfunds \$368,691.80)
- (2021 Snowfunds \$387,431.27)
- (2022 Snowfunds \$418,096.13)
- (2023 Snowfunds \$438,396.03)

**OTSEGO COUNTY ROAD COMMISSION**  
**For the Year Ended 12-31-23**  
**Actual Revenues and Expenditures for the Year**

<b>REVENUES</b>	<b>YE 2023</b>
Propert Tax: Millage	1,246,375.53
License & Permits	72,676.78
<u>Federal Sources</u>	
Surface Trans	1,303,419.51
<u>Transportation Funds</u>	
Engineering	10,000.00
Primary Roads	4,072,597.91
Local Roads	2,429,376.25
Primary Urban	487,268.37
Local Urban	221,508.96
Snow Removal funds	438,396.03
<u>State Sources</u>	
State D	5,986.78
Forest Road	85,106.54
<u>Local Contributions</u>	
Townships	1,506,509.74
Private	182,086.00
<u>Charges for Services</u>	
State Trunkline Maintenance	1,304,143.57
State TWA projects	786,945.16
Salvage	3,108.96
Signs	2,254.84
Audit Refund	72,963.36
<u>Other</u>	
Interest	366,129.36
Property Rentals	32,403.01
Oil Well	12,576.26
G/L on Equipment	50,000.00

**Total Revenues: 14,691,832.92**

<b>EXPENDITURES</b>	<b>YE 2023</b>
<u>Primary Road</u>	
Paving Projects	4,677,626.96
Routine maintenance	630,358.67
Traffic control	235,647.48
Winter maintenance	1,077,704.96
<u>Local Road</u>	
Paving projects	807,307.35
Routine maintenance	1,708,208.87
Traffic control	77,989.20
Winter maintenance	524,739.63
Equipment Expense - Net	243,237.23
Administrative Expense - Net	587,993.48
State Trunkline Maintenance	1,304,143.57
State TWA projects	786,945.16
Capital Outlay	441,273.45
Lease principle pmts	276,630.37
Lease interest Expense	5,286.53

**Total Expenditures: 13,385,092.91**

**Net increase: fund balance: 1,306,740.01**

Fringe benefits are allocated to primary and local road expenditures, equipment expense, shop supplies and inventory accounts at year-end.

<u>Equipment Expense-Net</u>	
Truck/Equipment expenses	1,342,714.19
Shop supplies & overhead	648,609.11
Equipment fuel	344,100.45
subtotal	2,335,423.75
Less: Rental revenue	(2,092,186.52)
Equipment Expense-Net	243,237.23

<u>Administrative Expense - Net</u>	
Total Admin. Expense	781,529.93
Less: State Maint. Overhead	(193,536.45)
	587,993.48

<u>Capital Outlay-Net</u>	
Capital Acquisitions	982,487.54
Less: Allowance Deprec.	(541,214.09)
Net Capital Outlay:	441,273.45

**OTSEGO COUNTY ROAD COMMISSION**  
**For the year ended December 31, 2023**

<u>REVENUES</u>	<u>BUDGET</u>	<u>ACTUAL</u>	<u>VARIANCE</u>	<u>EXPENDITURES</u>	<u>BUDGET</u>	<u>ACTUAL</u>	<u>VARIANCE</u>
Property Tax: Millage	1,175,000.00	1,246,375.53	71,375.53	<u>Primary Road</u>			
License & Permits	73,000.00	72,676.78	(323.22)	Paving Projects	6,260,000.00	4,677,626.96	(1,582,373.04)
<u>Federal Sources</u>							
Surface Trans.	1,216,000.00	1,303,419.51	87,419.51	Routine maintenance	800,000.00	630,358.67	(169,641.33)
<u>Transportation Funds</u>				Traffic control	190,000.00	235,647.48	45,647.48
Engineering	10,000.00	10,000.00	-	Winter maintenance	1,400,000.00	1,077,704.96	(322,295.04)
Primary Road	3,900,000.00	4,072,597.91	172,597.91				
Local Roads	2,378,000.00	2,429,376.25	51,376.25	<u>Local Road</u>			
Urban	694,000.00	708,777.33	14,777.33	Paving projects	1,375,313.00	807,307.35	(568,005.65)
Snow Funds	370,000.00	438,396.03	68,396.03				
<u>State Sources</u>				Routine maintenance	1,800,000.00	1,708,208.87	(91,791.13)
State D	7,400.00	5,986.78	(1,413.22)	Structures	500,000.00		(500,000.00)
Forest Road	86,000.00	85,106.54	(893.46)	Traffic control	120,000.00	77,989.20	(42,010.80)
HIP Covid	83,000.00	-	(83,000.00)	Winter maintenance	975,000.00	524,739.63	(450,260.37)
<u>Local Contributions</u>							
Townships	1,100,000.00	1,506,509.74	406,509.74	Equipment Expense - Net	650,000.00	243,237.23	(406,762.77)
Other		182,086.00	182,086.00				
<u>Charges for Service</u>				Administrative Expense - Net	720,000.00	587,993.48	(132,006.52)
State Trunkline Maint.	1,900,000.00	1,304,143.57	(595,856.43)				
State TWA Projects	800,000.00	786,945.16	(13,054.84)	State Trunkline Maintenance	1,900,000.00	1,304,143.57	(595,856.43)
Salvage	4,500.00	3,108.96	(1,391.04)	State TWA Projects	900,000.00	786,945.16	(113,054.84)
Signs	2,000.00	2,254.84	254.84				
Audit Refund		72,963.36	72,963.36	Capital Outlay - Net	540,000.00	441,273.45	(98,726.55)
<u>Other</u>							
Interest	65,000.00	366,129.36	301,129.36	Lease principle pmts	300,000.00	276,630.37	(23,369.63)
Property Rentals	30,000.00	32,403.01	2,403.01	Lease interest Expense	<u>15,000.00</u>	<u>5,286.53</u>	(9,713.47)
Oil Well		12,576.26	12,576.26				
G/L on Equipment	<u>30,000.00</u>	<u>50,000.00</u>	<u>20,000.00</u>				
Total Revenues:	13,923,900.00	14,691,832.92		Total Expenditures:	18,445,313.00	13,385,092.91	
Net increase: fund balance:	(4,521,413.00)	1,306,740.01					

Equipment Expense - Net

Truck/Equipment expenses	1,650,000.00	1,342,714.19	(307,285.81)
Shop supplies & overhead	850,000.00	648,609.11	(201,390.89)
Equipment fuel	450,000.00	344,100.45	(105,899.55)
subtotal	<u>2,950,000.00</u>	<u>2,335,423.75</u>	<u>(614,576.25)</u>
Less: Rental revenue	(2,300,000.00)	(2,092,186.52)	207,813.48
total	<u>650,000.00</u>	<u>243,237.23</u>	<u>(406,762.77)</u>

Administrative Expense - Net

Total Admin. Expense	970,000.00	781,529.93	(188,470.07)
Less: State Maint. Overhead	(250,000.00)	(193,536.45)	56,463.55
total	<u>720,000.00</u>	<u>587,993.48</u>	<u>(132,006.52)</u>

Capital Outlay - Net

Capital Acquisitions	1,340,000.00	982,487.54	(357,512.46)
Less: Allowance Deprec.	(800,000.00)	(541,214.09)	258,785.91
total	<u>540,000.00</u>	<u>441,273.45</u>	<u>(98,726.55)</u>



## Estimated Distribution Schedule for Michigan Transportation Funding by County

Based on Treasury's ORTA Estimates 02/7/2024

**Notes:**

FY2024 - respective shares of \$600M Redirected Income Tax Transfers and \$108M Marijuana Tax Transfers are included.

FY2025 - respective shares of \$600M Redirected Income Tax Transfers and \$113.6M Marijuana Tax Transfers are included.

FY2026 - respective shares of \$600M Redirected Income Tax Transfers and \$117M Marijuana Tax Transfers are included.

County	Estimated Revenues Fiscal Year 2024	Estimated Revenues Fiscal Year 2025	Estimated Revenues Fiscal Year 2026
Lenawee	14,594,468.80	14,954,185.07	15,267,133.53
Livingston	29,077,559.75	29,794,247.13	30,417,755.79
Luce	3,192,771.75	3,271,465.38	3,339,927.83
Mackinac	4,568,003.58	4,680,593.17	4,778,544.64
Macomb	83,078,027.70	85,125,688.25	86,907,126.25
Manistee	7,418,533.09	7,601,380.92	7,760,456.16
Marquette	11,154,166.81	11,429,088.45	11,668,266.69
Mason	7,379,375.23	7,561,257.93	7,719,493.51
Mecosta	8,503,672.42	8,713,266.17	8,895,610.00
Menominee	6,971,688.99	7,143,523.27	7,293,016.85
Midland	11,877,157.23	12,169,898.71	12,424,580.03
Missaukee	5,755,159.00	5,897,008.93	6,020,416.52
Monroe	22,808,455.88	23,370,625.88	23,859,706.47
Montcalm	11,933,293.69	12,227,418.80	12,483,303.83
Montmorency	4,501,021.03	4,611,959.67	4,708,474.84
Muskegon	20,026,297.72	20,519,894.66	20,949,317.57
Newaygo	10,186,971.40	10,438,054.15	10,656,492.86
Oakland	130,698,667.40	133,920,054.72	136,722,619.69
Oceana	7,302,759.83	7,482,754.15	7,639,346.87
Ogemaw	6,180,210.59	6,332,536.94	6,465,058.89
Ontonagon	3,952,055.48	4,049,463.52	4,134,207.26
Osceola	6,714,075.07	6,879,559.82	7,023,529.40
Oscoda	4,637,550.85	4,751,854.60	4,851,297.37
Otsego	7,371,573.67	7,553,264.09	7,711,332.39
Ottawa	38,845,641.14	39,803,086.69	40,636,051.84
Presque Isle	5,323,979.11	5,455,201.56	5,569,363.38
Roscommon	7,784,225.25	7,976,086.47	8,143,003.22
Saginaw	25,238,858.56	25,860,931.76	26,402,127.36
Sanilac	11,134,243.38	11,408,673.96	11,647,424.99
Schoolcraft	3,605,402.42	3,694,266.35	3,771,576.82
Shiawassee	10,746,847.43	11,011,729.70	11,242,173.81
St. Clair	21,513,078.89	22,043,321.18	22,504,625.06
St. Joseph	9,613,952.61	9,850,911.92	10,057,063.43
Tuscola	11,384,413.33	11,665,009.95	11,909,125.36
Van Buren	12,485,742.79	12,793,484.35	13,061,215.52
Washtenaw	37,604,420.47	38,531,273.09	39,337,622.79
Wayne	119,671,113.47	122,620,699.83	125,186,801.53
Wexford	7,847,080.05	8,040,490.44	8,208,754.50
<b>Total</b>	<b>\$ 1,284,916,500.00</b>	<b>\$ 1,316,586,400.00</b>	<b>\$ 1,344,138,800.00</b>

*+158,886.76 from  
2023 data ↑2.2%*

*↑2.4%  
+181,690.42*

*↑2.05%  
+158,068.30*

## Estimated Distribution Schedule for Michigan Transportation Funding by County

Based on Treasury's ORTA Estimates 02/7/2024

**Notes:**

FY2024 - respective shares of \$600M Redirected Income Tax Transfers and \$108M Marijuana Tax Transfers are included.

FY2025 - respective shares of \$600M Redirected Income Tax Transfers and \$113.6M Marijuana Tax Transfers are included.

FY2026 - respective shares of \$600M Redirected Income Tax Transfers and \$117M Marijuana Tax Transfers are included.

County	Estimated Revenues Fiscal Year 2024	Estimated Revenues Fiscal Year 2025	Estimated Revenues Fiscal Year 2026
Alcona	5,037,403.16	5,161,562.24	5,269,579.03
Alger	3,786,572.18	3,879,901.48	3,961,096.77
Allegan	18,767,849.51	19,230,428.93	19,632,866.98
Alpena	6,339,326.47	6,495,574.62	6,631,508.48
Antrim	6,643,378.76	6,807,121.03	6,949,574.68
Arenac	4,990,451.51	5,113,453.35	5,220,463.35
Baraga	3,638,086.12	3,727,755.62	3,805,766.92
Barry	10,294,273.57	10,548,001.05	10,768,740.65
Bay	15,319,186.94	15,696,765.65	16,025,254.22
Benzie	5,231,636.00	5,360,582.43	5,472,764.14
Berrien	21,245,931.70	21,769,589.49	22,225,164.93
Branch	8,465,353.04	8,674,002.31	8,855,524.46
Calhoun	16,318,369.55	16,720,575.55	17,070,489.53
Cass	9,759,340.89	9,999,883.64	10,209,152.69
Charlevoix	6,386,218.81	6,543,622.75	6,680,562.12
Cheboygan	7,602,051.93	7,789,423.04	7,952,433.45
Chippewa	8,921,664.76	9,141,560.94	9,332,867.75
Clare	7,716,493.92	7,906,685.72	8,072,150.12
Clinton	13,452,538.95	13,784,109.57	14,072,571.70
Crawford	4,984,223.01	5,107,071.34	5,213,947.78
Delta	7,768,423.36	7,959,895.08	8,126,473.01
Dickinson	5,721,677.59	5,862,702.27	5,985,391.94
Eaton	15,912,056.07	16,304,247.49	16,645,448.91
Emmet	7,906,657.61	8,101,536.46	8,271,078.52
Genesee	42,371,879.03	43,416,237.31	44,324,815.38
Gladwin	6,531,548.82	6,692,534.77	6,832,590.44
Gogebic	4,460,795.80	4,570,743.00	4,666,395.61
Grand Traverse	15,395,607.01	15,775,069.29	16,105,196.52
Gratiot	8,709,709.98	8,924,382.03	9,111,143.91
Hillsdale	8,881,652.43	9,100,562.39	9,291,011.24
Houghton	7,410,370.60	7,593,017.25	7,751,917.47
Huron	9,934,597.24	10,179,459.59	10,392,486.68
Ingham	25,011,821.28	25,628,298.61	26,164,625.84
Ionia	10,150,023.09	10,400,195.15	10,617,841.60
Iosco	7,274,909.28	7,454,217.16	7,610,212.67
Iron	4,452,936.06	4,562,689.53	4,658,173.62
Isabella	10,767,811.82	11,033,210.80	11,264,104.46
Jackson	22,144,089.10	22,689,884.15	23,164,718.76
Kalamazoo	27,813,099.70	28,498,621.36	29,095,016.26
Kalkaska	6,401,664.13	6,559,448.75	6,696,719.32
Kent	64,070,687.46	65,649,865.78	67,023,730.30
Keweenaw	2,249,233.44	2,304,671.29	2,352,901.49
Lake	5,697,806.11	5,838,242.44	5,960,420.21
Lapeer	14,325,029.55	14,678,104.82	14,985,275.70
Leelanau	5,969,546.80	6,116,680.85	6,244,685.54



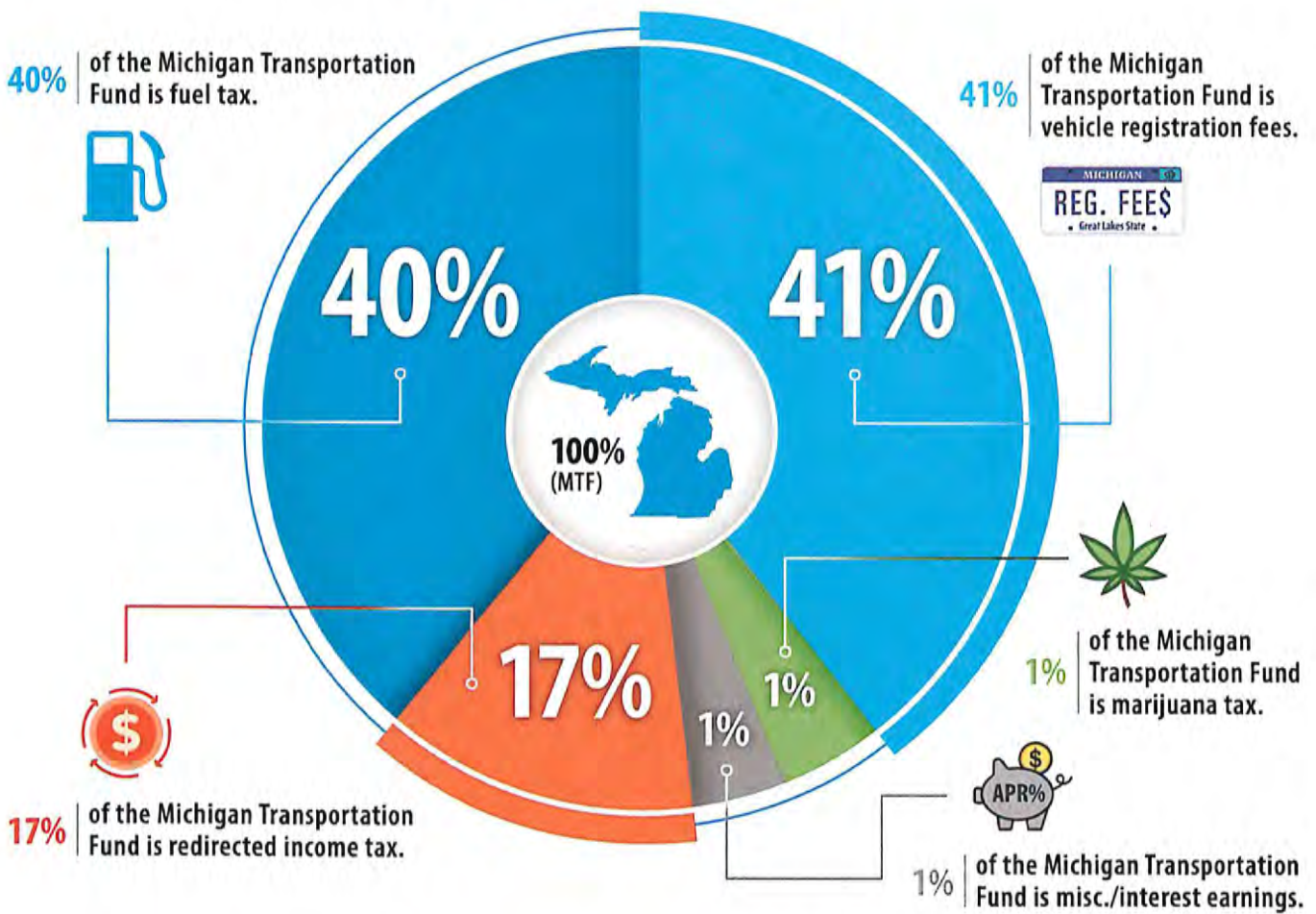
## NEW LOCAL ROAD AGENCY GUIDANCE

# Michigan Transportation Fund Sources – Not so simple anymore

County road agencies are accustomed to saying **Michigan Transportation Fund (MTF)** dollars are about 50:50 vehicle registration fees and fuel tax. But the times have changed!

With full implementation of the 2015 Transportation Package in FY2021, a new breakout formula should be used.

**The new 2021 MTF gross revenue breakdown is 40% fuel tax + 41% vehicle registration fees + 17% redirected income tax + 1% misc./interest earnings + 1% marijuana tax.**



**For more information contact:**

County Road Association of Michigan | 101 S. Washington Square, Suite 200 | Lansing, MI 48893 | 517.482.1189

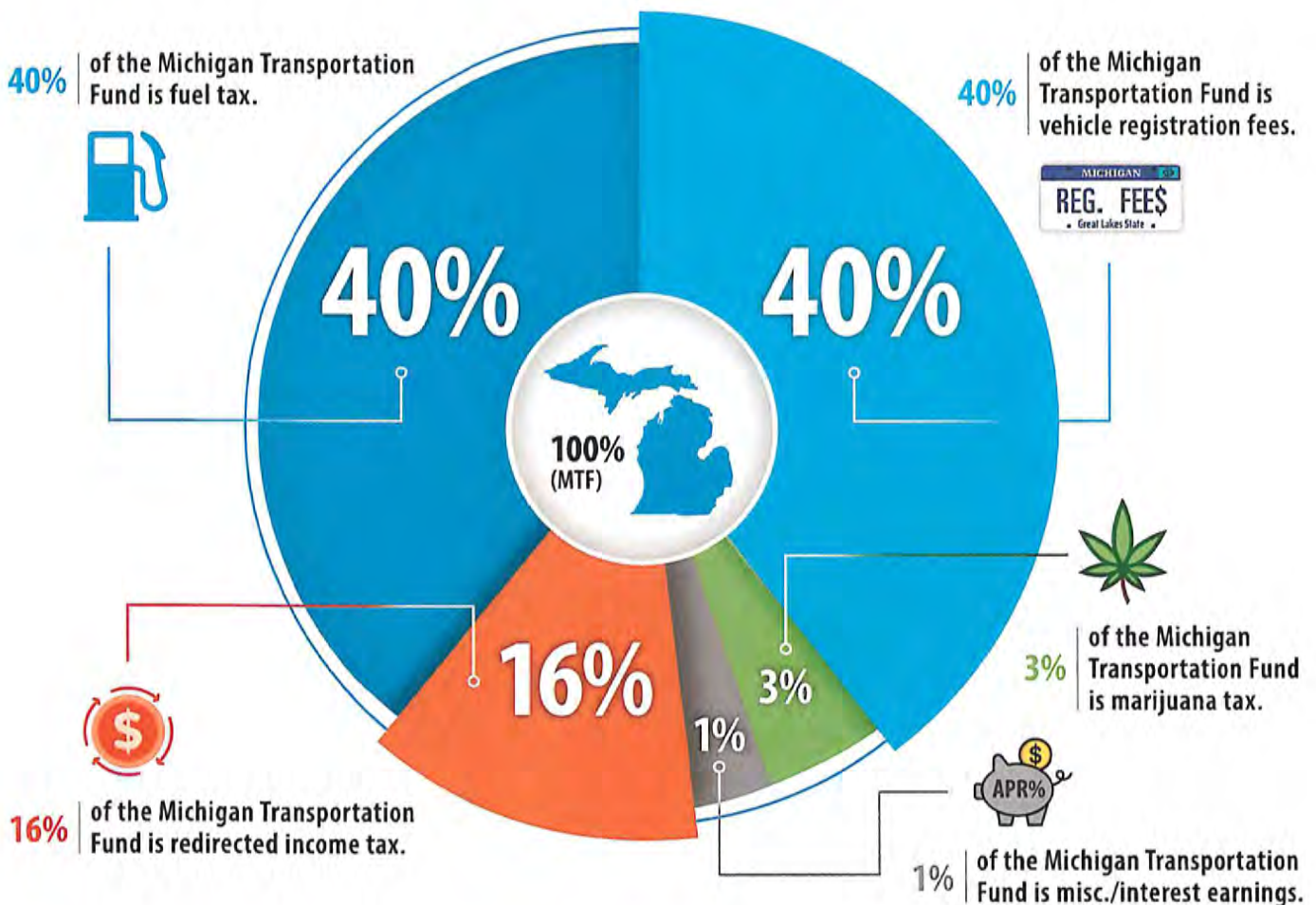


### NEW LOCAL ROAD AGENCY GUIDANCE

# Michigan Transportation Fund Sources – Not so simple anymore

County road agencies are accustomed to saying **Michigan Transportation Fund (MTF)** dollars are about 50:50 vehicle registration fees and fuel tax. But the times have changed!

**The 2024 MTF gross revenue breakdown is 40% fuel tax + 40% vehicle registration fees + 16% redirected income tax + 3% marijuana tax + 1% misc./interest earnings.**



**For more information contact:**

County Road Association of Michigan | 101 S. Washington Square, Suite 200 | Lansing, MI 48893 | 517.482.1189



1134 Municipal Way  
Lansing, MI 48917  
(800) 767-6377

Otsego County Road Commission  
669 W McCoy Rd  
PO Box 537  
Gaylord, MI 49734-0537

10.4

**Statement of Fiduciary Net Position  
For the Year Ending 12/31/2023**

Customer Number: 690101

**Reserve for Employee Contributions**

Bargaining Unit	Balance as of 12/31/2022	Invoiced & Other Contributions	Transfers	EE Refunds	Interest on EE Balance	Balance as of 12/31/2023
69010101	\$324,005.38	\$52,480.36	(\$98,775.92)	\$0.00	\$11,218.20	\$288,928.02
69010110	\$165,634.77	\$51,338.88	\$0.00	(\$16,986.87)	\$7,380.53	\$207,367.31
69010111	\$229,092.58	\$28,372.26	(\$33,743.32)	\$0.00	\$9,563.75	\$233,285.27
<b>Total</b>	<b>\$718,732.73</b>	<b>\$132,191.50</b>	<b>(\$132,519.24)</b>	<b>(\$16,986.87)</b>	<b>\$28,162.48</b>	<b>\$729,580.60</b>

**Reserve for Employer Contributions and Benefit Payments**

Bargaining Unit	Balance as of 12/31/2022	Invoiced & Other Contributions	Transfers & Fees	Benefits Paid	Net Investment Income	Admin Expenses	Balance as of 12/31/2023
69010101	\$4,492,074.99	\$399,674.00	\$98,775.92	(\$662,451.71)	\$513,508.71	(\$11,162.00)	\$4,830,419.91
69010110	\$180,502.33	\$15,500.57	\$0.00	\$0.00	\$33,906.95	(\$865.41)	\$229,044.44
69010111	\$2,165,277.49	\$176,508.17	\$33,743.32	(\$298,099.65)	\$251,665.80	(\$5,551.08)	\$2,323,544.05
690101S1	\$2,775,832.75	\$120,000.00	\$0.00	\$0.00	\$317,792.65	(\$6,719.32)	\$3,206,906.08
<b>Total</b>	<b>\$9,613,687.56</b>	<b>\$711,682.74</b>	<b>\$132,519.24</b>	<b>(\$960,551.36)</b>	<b>\$1,116,874.11</b>	<b>(\$24,297.81)</b>	<b>\$10,589,914.48</b>

**Combined Reserves**

	Balance as of 12/31/2022	Invoiced & Other Contributions	Transfers	Benefits Paid	Net Investment Income	Admin Expenses	Balance as of 12/31/2023
<b>Total</b>	<b>\$10,332,420.29</b>	<b>\$843,874.24</b>	<b>\$0.00</b>	<b>(\$977,538.23)</b>	<b>\$1,145,036.59</b>	<b>(\$24,297.81)</b>	<b>\$11,319,495.08</b>

Outstanding Accounts Receivable at 12/31/2023: \$68,342.52





1134 Municipal Way  
Lansing, MI 48917  
(800) 767-6377

Thelma Moulds  
Otsego County Road Commission  
669 W McCoy Rd  
PO Box 537  
Gaylord, MI 49734-0537

**Statement of Fiduciary Net Position  
For the Year Ending 12/31/2022**

Customer Number: 690101

**Reserve for Employee Contributions**

Bargaining Unit	Balance as of 12/31/2021	Invoiced & Other Contributions	Transfers	EE Refunds	Interest on EE Balance	Balance as of 12/31/2022
69010101	\$282,309.34	\$69,450.34	(\$39,536.47)	\$0.00	\$11,782.17	\$324,005.38
69010110	\$106,795.56	\$53,787.78	\$0.00	\$0.00	\$5,051.43	\$165,634.77
69010111	\$189,846.96	\$31,446.52	(\$1,127.33)	\$0.00	\$8,926.43	\$229,092.58
<b>Total</b>	<b>\$578,951.86</b>	<b>\$154,684.64</b>	<b>(\$40,663.80)</b>	<b>\$0.00</b>	<b>\$25,760.03</b>	<b>\$718,732.73</b>

**Reserve for Employer Contributions and Benefit Payments**

Bargaining Unit	Balance as of 12/31/2021	Invoiced & Other Contributions	Transfers & Fees	Benefits Paid	Net Investment Income	Admin Expenses	Balance as of 12/31/2022
69010101	\$5,185,436.17	\$402,432.00	\$39,536.47	(\$549,922.82)	(\$575,372.26)	(\$10,034.57)	\$4,492,074.99
69010110	\$208,290.80	\$10,623.14	\$0.00	\$0.00	(\$37,774.16)	(\$637.45)	\$180,502.33
69010111	\$2,545,601.71	\$194,529.68	\$1,127.33	(\$280,428.20)	(\$290,553.49)	(\$4,999.54)	\$2,165,277.49
690101S1	\$2,980,492.60	\$110,000.00	\$0.00	\$0.00	(\$309,027.21)	(\$5,632.64)	\$2,775,832.75
<b>Total</b>	<b>\$10,919,821.28</b>	<b>\$717,584.82</b>	<b>\$40,663.80</b>	<b>(\$830,351.02)</b>	<b>(\$1,212,727.12)</b>	<b>(\$21,304.20)</b>	<b>\$9,613,687.56</b>

**Combined Reserves**

	Balance as of 12/31/2021	Invoiced & Other Contributions	Transfers	Benefits Paid	Net Investment Income	Admin Expenses	Balance as of 12/31/2022
<b>Total</b>	<b>\$11,498,773.14</b>	<b>\$872,269.46</b>	<b>\$0.00</b>	<b>(\$830,351.02)</b>	<b>(\$1,186,967.09)</b>	<b>(\$21,304.20)</b>	<b>\$10,332,420.29</b>

Outstanding Accounts Receivable at 12/31/2022: \$87,349.52

# Otsego County Road Commission

10.1

Troy W. Huff, Chair  
Kathy M. Heinz, Vice Chair  
Michael D. Dipzinski, Commissioner  
Lukas A. Gordon, Commissioner  
Thomas H. Wagar, Commissioner

Kirk R. Harrier, Managing Director  
Rebecca J. Hilmert, Finance Mgr./Board Sec.  
Tianne N. Jones, Human Resources/Payroll Mgr.  
Scott A. Butkovich, Operations Mgr.

## MEMO

Date: March 14, 2024  
To: Otsego County Road Commission Board  
From: David Fox, Equipment/Facilities Supervisor  
Re: OCRC Equipment List

Attached to this memo is an updated OCRC equipment list including the storage locations.

**EQUIPMENT LIST (updated February 27,2024)**

**TRUCKS**

VEH#	YEAR	MAKE	MILES	HOURS	DISPOSAL DATE	NOTES	STORAGE LOCATION
546	1998	IHC	295	14,328	2025-2027	STUMP STUCK	DOME
547	1998	IHC	327,059	15,804	2022-2023	SPARE	READY TO DISPOSE OF
550	1998	IHC	212,499	12,658	2023	BROOM TRUCK	READY TO DISPOSE OF
603	2002	WWS	353,962	18,417	2027-2030	PLOW TRUCK	MAIN GARAGE
604	2002	WWS	404,174	19,071	2027-2030	PLOW TRUCK	MAIN GARAGE
605	2002	WWS	437,974	21,898	2027-2030	PLOW TRUCK	MAIN GARAGE
606	2002	WWS	388,735	19014	2025-2028	PLOW TRUCK	MAIN GARAGE
608	1993	WWS	75,733	5,737	next 5 years	LOBOY TRUCK	DOME
614	2004	IHC	317,604	15,445	NEXT 10 YEARS	WATER/BROOM	DOME
617	2005	IHC	132,162	8,430	NEXT 10 YEARS	BRUSH TRUCK	POLE BARN
618	2005	IHC	342,723	15,959	2027-2030	PLOW TRUCK	MAIN GARAGE
619	2005	IHC	342,723	14245	NEXT 5-10 YEARS	PLOW/DUMP	DOME
624	2006	IHC	262,356	12,960	2027-2030	STUMP STUCK	DOME
625	2006	IHC	260,356	12,960	2027-2030	PLOW TRUCK	MAIN GARAGE
626	2006	IHC	333,891	14,491	2027-2030	PLOW TRUCK	MAIN GARAGE
628	2010	WWS	247,051	11,905	2026-2030	PLOW TRUCK	MAIN GARAGE
629	2010	WWS	220,862	10,146	2026-2030	PLOW TRUCK	MAIN GARAGE
710	2014	WWS	163,288	7,423	2030-2035	PLOW TRUCK	MAIN GARAGE
711	2014	WWS	192,717	7,422	2030-2035	PLOW TRUCK	MAIN GARAGE
712	2000	IHC	227,045	12,978	NEXT 5-10 YEARS	SIGN TRUCK	MAIN GARAGE
715	2016	WWS	172,190	7,062	2032-2037	PLOW TRUCK	MAIN GARAGE
716	2016	WWS	145,855	6,403	2032-2037	PLOW TRUCK	MAIN GARAGE
718	2017	WWS	76,954	4,651	2033-2038	PLOW TRUCK	MAIN GARAGE
719	2017	WWS	77,099	4,340	2033-2038	PLOW TRUCK	MAIN GARAGE
720	2017	WWS	69,670	4,775	2033-2038	PLOW TRUCK	MAIN GARAGE
721	2018	WWS	102,371	4,176	2034-2039	PLOW TRUCK	MAIN GARAGE
722	2019	WWS	108,840	4,122	2035-2040	PLOW TRUCK	MAIN GARAGE
723	2019	WWS	116,948	4,901	2035-2040	PLOW TRUCK	MAIN GARAGE
954	2000	IHC	88,673	8,760	2032	BOOM TRUCK	MAIN GARAGE
971	2021	KW	58,000	1998	2037-2042	PLOW TRUCK	MAIN GARAGE
972	2021	KW	65,473	2310	2037-2042	PLOW TRUCK	MAIN GARAGE
975	2022	KW	34,312	1242	2038-2043	PLOW TRUCK	MAIN GARAGE
976	1989	WWS	214,699	3045	NEXT 10 YEARS	LOBOY TRUCK	DOME
979	2024	WWS	12,531	390	2040-2045	PLOW TRUCK	MAIN GARAGE
980	2024	WWS	9,529	373	2040-2045	PLOW TRUCK	MAIN GARAGE



EQUIPMENT									
VEH#	YEAR	MAKE	MILES	HOURS	DISPOSAL DATE	NOTES	REPLACEMENT COST NEW	REPLACEMENT COST USED	STORAGE LOCATION
18	1989	TRANS	NO MILES	NO	NEXT 10 YEARS?	LOWBOY TRAIL	\$50,000.00	\$20,000-30,000	OUTSIDE
398	1978	OWATO	NO MILES	7000?	UNKNOWN	FORK LIFT	\$100,000	\$30,000-50,000	MAIN GARAGE
505	1992	CAT	NO MILES	16,285	WHEN IT DIES	GRADER	\$395,000	NOT RECOMMEND BUYING USED	POLE BARN
509	1978	OSH	UNKNOWN	?	?	SNOWBLOWER	\$400,000?	?	POLE BARN
510	1994	CAT	NO MILES	6,434	DO NOT REPLACE	BACK-HOE	DO NOT REPLACE	REPLACED WITH 974 MINI	OUTSIDE/COUNTY BARN
543	1997	CAT	NO MILES	4,237	NEXT 10 YEARS?	DOZER	\$450,000.00	\$100,000-300,000	POLE BARN
587	1987	CAT	NO MILES	12,911	?	EXCAVATOR	IF REPLACED RECOMMEND USED	\$50,000-150,000	POLE BARN
589	1990	DYN	NO MILES	5000?	NEXT 10 YEARS?	ROLLER	RECOMMEND USED	\$30,000-60,000	COUNTY LEAN-TO
607	1989	JD	NO MILES	6,325	NEXT 10 YEARS?	DOZER	RECOMMEND USED	\$40,000-80,000	POLE BARN
609	2002	JD	NO MILES	5,074	NEXT 10 YEARS?	BOOM MOWER	\$200,000	RECOMMEND USED \$50,000	POLE BARN LEAN-TO
610	1997	CAT	NO MILES	3,138	2032	ROLLER		RECOMMEND USED \$75,000	COUNTY LEAN-TO
612	1998	BEUTH	NO MILES	483?	NEXT 10 YEARS?	ROLLER	RECOMMEND USED	\$15,000-30,000	COUNTY LEAN-TO
622	1987	JD	NO MILES	5645	DO NOT REPLACE	TRACTOR	DO NOT REPLACE		COUNTY LEAN-TO
623	2006	CAT	53,400	7,411	2026-2031?	GRADER	\$425,000	NOT RECOMMEND BUYING USED	POLE BARN/MAIN GARAGE
642	2000	SMITH	NO MILES	NO	NEXT 10 YEARS?	SIDE DP TRAILER	\$100,000	MY WANT TO BUY USED	OUTSIDE
651	2001	JD	NO MILES	1,839	2022	LAWN TRACTOR	\$25000-30,000	REPLACED WITH 983	NEED TO DISPOSE OF
653	2001	JD	NO MILES	1,313	DO NOT REPLACE	LAWN TRACTOR	DO NOT REPLACE	REPLACED WITH 983	NEED TO DISPOSE OF
668	2000	GILCR	NO MILES	548	?	PAVER		RECOMMEND USED \$35,000-75,000	COUNTY LEAN-TO
702	2010	SPAL	NO MILES	NO	DO NOT REPLACE	PATCH TRAILER	REPLACED BY 977	NEED TO DISPOSE OF	NEED TO DISPOSE OF
704	2000	MOR	NO MILES	1,682	?	BRUCH CHIPPER	DO NOT REPLACE		COUNTY LEAN-TO
713	1994	FORD	NO MILES	3,552	2032	TRACTOR	\$150,000	\$25,000-50,000	COUNTY LEAN-TO
951	2015	CAT	14,888	3,184	2030	LOADER	\$200,000		MAIN GARAGE
953	2016	KMI	NO MILES	2,034	2026	PATCH TRAILER	\$32,000		COUNTY LEAN-TO
956	2002	NEW H	NO MILES	8,760	2032	TRACTOR	\$170,000	RECOMMEND USED \$35,000-65,000	POLE BARN LEAN-TO
957	2001	JD	NO MILES	5,709	2026-2031	TRACTOR	\$200,000	RECOMMEND BUY USED \$50,000	POLE BARN
958	2017	KMI	NO MILES	2,061	2027	PATCH TRAILER	\$32,000		COUNTY LEAN-TO
963	2018	MOR	NO MILES	333	2026-2031	BRUCH CHIPPER	\$75,000		POLE BARN
964	2018	VOLVO	NO MILES	2,036	2026-2027	LOADER	TO BUY NEW \$300,000		MAIN GARAGE
966	2019	KMI	NO MILES	1990	2027-2032	PATCH TRAILER	32,000		COUNTY LEAN-TO
967	2020	CAT	6,904	1140	2030-2035	GRADER	\$350,000		MAIN GARAGE
970	2020	VOLVO	NO MILES	1559	2028-2030	LOADER	TO BUY NEW \$300,000		MAIN GARAGE
974	2021	VOLVO	NO MILES	335	2036	MINI EXCAVAT	\$70,000		POLE BARN
977	2021	KMI	NO MILES	827	2031-2036	PATCH TRAILER	\$32,000		COUNTY LEAN-TO
978	2023	PJ	NO MILES	NO	2038	GOOSE NECK	\$20,000		OUTSIDE
981	2023	RW	NO MILES	NO	2023-2038	SHOULDER MACH	\$75,000		COUNTY LEAN-TO
983	2023	KUBOTA	NO MILES	25	2043-2053	TRACTOR	\$40,000		MAIN GARAGE

**PICK-UP TRUCK AND MEDIUM DUTY TRUCKS**

VEH#	YEAR	MAKE	MILES	HOURS	DISPOSAL DATE	NOTES	STORAGE LOCATION
611	2002	GMC	52,817	3,217	2025-2030	SERVICE TRUCK	SHOP
613	2001	IHC	205,543	13,628	2025-2030	2.5 TON	DOME
631	2007	GMC	230,689	9,083	2023	3/4 TON	NEED TO DISPOSE OF SHOP
633	2011	FORD	193,236	11,108	2023	3/4 TON	NEED TO DISPOSE OF DOME
634	2012	IHC	111,468	5,153	2030-2035	2.5 TON	DOME
635	2013	RAM	215,062	9,642	2024	1/2 TON	NEED TO DISPOSE OF SIDE OF MAIN GARAGE
636	2013	GMC	88,196	3,250	2030	1/2 TON	MANAGER
730	2014	RAM	242,138	9,947	2028-2032	1/2 TON	SIDE OF MAIN GARAGE
731	2015	RAM	116,988	8,175	2025-2027	3/4 TON	SIDE OF MAIN GARAGE
732	2015	RAM	175,746	8,662	2025-2027	3/4 TON	SIDE OF MAIN GARAGE
942	2016	RAM	128,954	5,925	2026-2028	3/4 TON	SIDE OF MAIN GARAGE
943	2018	RAM	139,967	3,701	2028-2030	3/4 TON	PARTS TRUCK FOR SHOP SHOP
944	2018	RAM	123,650	3,025	2028-2030	3/4 TON	SIDE OF MAIN GARAGE
960	2001	IHC	109,412	9,897	2025-2030	2.5 TON	DOME
982	2023	RAM	687	73	2035-2040	1 TON	GOOSE NECK TRUCK FOR TRAILER POLE BARN
984	2024	RAM	8,370	310	2024-2029	3/4 TON	SIDE OF MAIN GARAGE
985	2024	RAM	2000	50	2024-2029	3/4 TON	OPERATIONS MANAGER
986	2024	RAM	150	5	2024-2029	3/4 TON	ROAD MAINTENANCE SUPERVISER
987	2024	RAM	150	3	2024-2029	3/4 TON	SIDE OF MAIN GARAGE
988	2024	RAM	150	3	2024-2029	3/4 TON	SIDE OF MAIN GARAGE